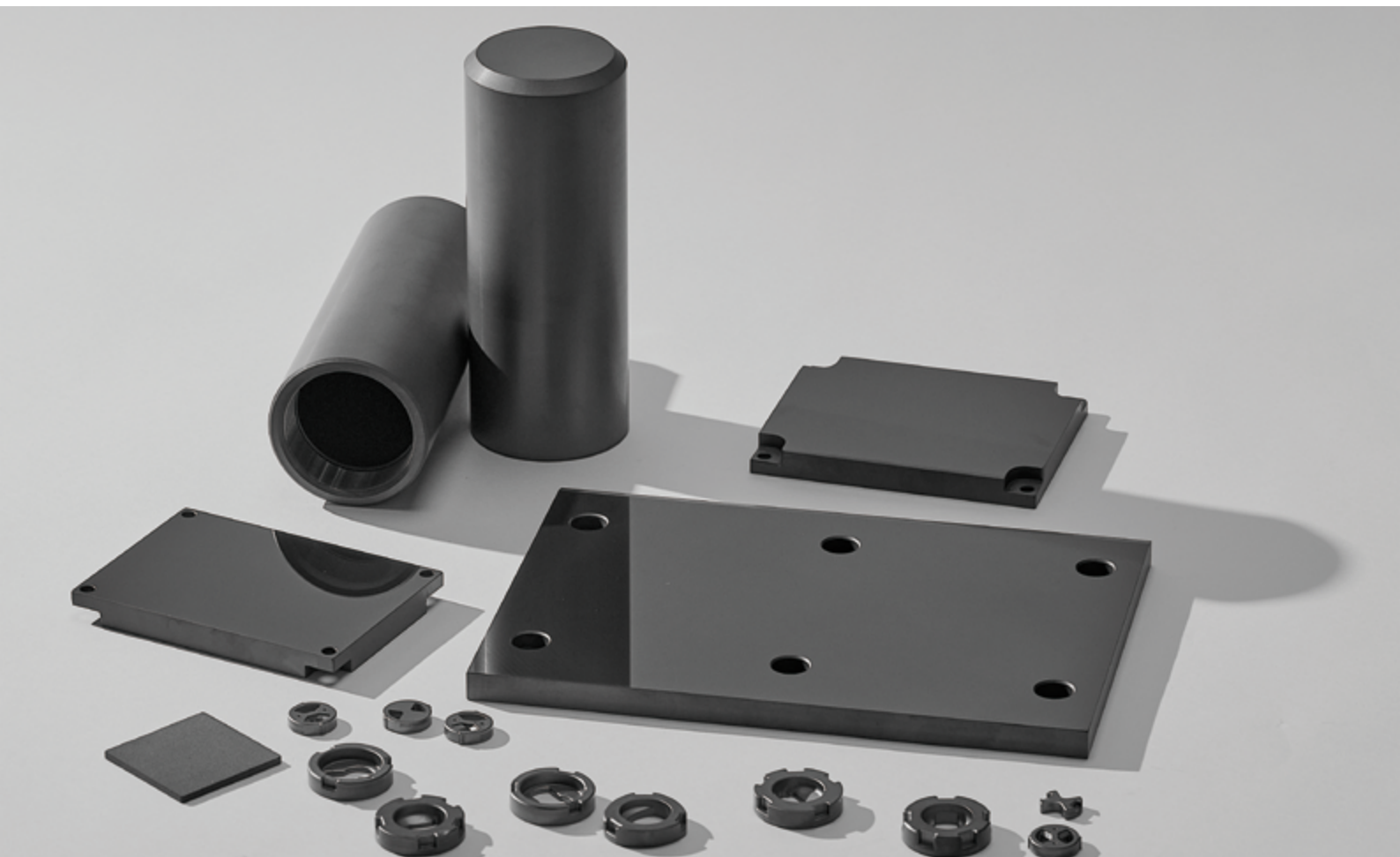


S.C.C
The Preferred Choice

Advanced technology in fine ceramics!



The Ceramic Technology

The preferred choice for your future growth: Shinhan Ceramic Co., Ltd.

Products Area

CERAMIC SEAL DISC

ENGINEERING FINE CERAMIC

SILICON CARBIDE (SiC)

CERAMIC CARTRIDGE

HEADWORK CARTRIDGE

THERMOSTATIC CARTRIDGE



The advantage of our products

The raw material selection

The main criteria in selecting the initial materials will be their fitness and their purity, which will contribute to the proper characteristics of the ceramic products.

Quality Control

The quality control data is prepared for all the various items, including Surface roughness, Flatness, Parallelism, Surface contact, Firing operation Pressing operations & Individual inspection etc.

Research & Development

To be world's premier in this field in the 21st century which satisfies the increasing and diverse desire of customers, we concentrate its R&D activities on the process development of high property products.

Future strategy

As a corporations aiming at worlds leading ceramic manufacturer in the 21st century, Shinhan Ceramics Co., Ltd. Will continue to pure high-quality management strategies through bold R&D investment for technological advancement and active globalization drive.

Shinhan Ceramic Co., Ltd. has declared the year 1999 as its first year of second phase for long-term development plan.

Continuing its globalization drive, the company is actively participating in technological exchanges and joint ventures with benchmarked corporation in the world.

Contents

CERAMIC SEAL DISC.....	6
ENGINEERING FINE CERAMIC.....	8
SILICON CARBIDE (SiC).....	9
CERAMIC CARTRIDGE	
SCC 25SR.....	11
SCC 25SF.....	11
SCC 25SMJF.....	12
SCC 25ER,A.....	12
SCC 25EF,A.....	13
SCC 25QR.....	13
SCC 25NR.....	14
SCC 25NJF.....	14
SCC 25VJR.....	15
SCC 33AF.....	15
SCC 33AF-H.....	16
SCC 35GR.....	16
SCC 35GF.....	17
SCC 35SR.....	17
SCC 35SF.....	18
SCC 35SR-3S.....	18
SCC 35SF-3S.....	19
SCC 35JR.....	19
SCC 35JF.....	20
SCC 35VR.....	20
SCC 35VJR.....	21
SCC 35ER.....	21
SCC 35EF.....	22
SCC 35ER,A.....	22
SCC 35EF,A.....	23
SCC 35MR.....	23
SCC 35MF.....	24
SCC 35MZ.....	24
SCC 35SMJR.....	25
SCC 35QR.....	25
SCC 35AF-H.....	26
SCC 38AF,A.....	26
SCC 38AF, A-CO.....	27
SCC 38AF,A-3S.....	27
SCC 38MF.....	28
SCC 38EF.....	28
SCC 38EF-CO.....	29
SCC 38EF,A.....	29
SCC 38EF,A-CO.....	30
SCC 38AF-H.....	30
SCC 40SMJR.....	31
SCC 40JR.....	31
SCC 40JF.....	32
SCC 40AR.....	32
SCC 40AF.....	33
SCC 40ER.....	33
SCC 40EF.....	34
SCC 47JR.....	34
DIVERTER CARTRIDGE	
SSCC 25DP.....	36
SCC 25DD-1.....	36
SCC 25D-2W.....	37
SCC 29D/DS.....	37
SCC D31.....	38
SCC 31D-2W.....	38
SCC 35D-3W.....	39
SCC 35GD-2W.....	39
SCC 40d-4W(3W,5W).....	40
SCC D56.....	40
HEADWORK CARTRIDGE	
SCC S1015-RO.....	42
SCC S1015-SO.....	42
SCC S1030-KO.....	43
SCC S1062-NO.....	43
SCC S1062-TO.....	44
SCC M20.....	44
SCC S1091-SO.....	45
SCC S1015-PO.....	45
SCC S1030-PO.....	46
THERMOSTATIC CARTRIDGE	
SCC TH100.....	49
SCC TH200.....	49
SCC TH300.....	50
SCC TH800.....	50
SCC TH100P.....	51
SCC TH720.....	51



New Challenge from Innovation !

Shinhan Ceramic Company S.C.C. innovates itself to be a world top-class special material provider by challenge and innovation.



“Why Choose Shinhan as their Partner?”

Shinhan Ceramic has contributed all its effort to the development of inorganic materials industry since 1993. On the basis of the accumulated inorganic materials technology, knowledge and our advanced materials, Shinhan initiates Fine ceramics, High alumina and Metallized products for various industrial customers.

Shinhan Ceramic Co. Ltd. has been in existence for the short time but its achievements has been remarkable as we now possess high state of confidence in the field of industrial ceramic.

It is our desire to advance into the world’s premier fine ceramic manufacturer by responding to the expectations of customers and the need of futures.

We believe that our future rests with making the best even better, and that includes our commitment to customer support and service.

We hope you feel that confident in expanding your future growth with our company and sincerely hope to serve you in the near future.

A detailed information on our company with special focus on this field business is given here for your evaluation.

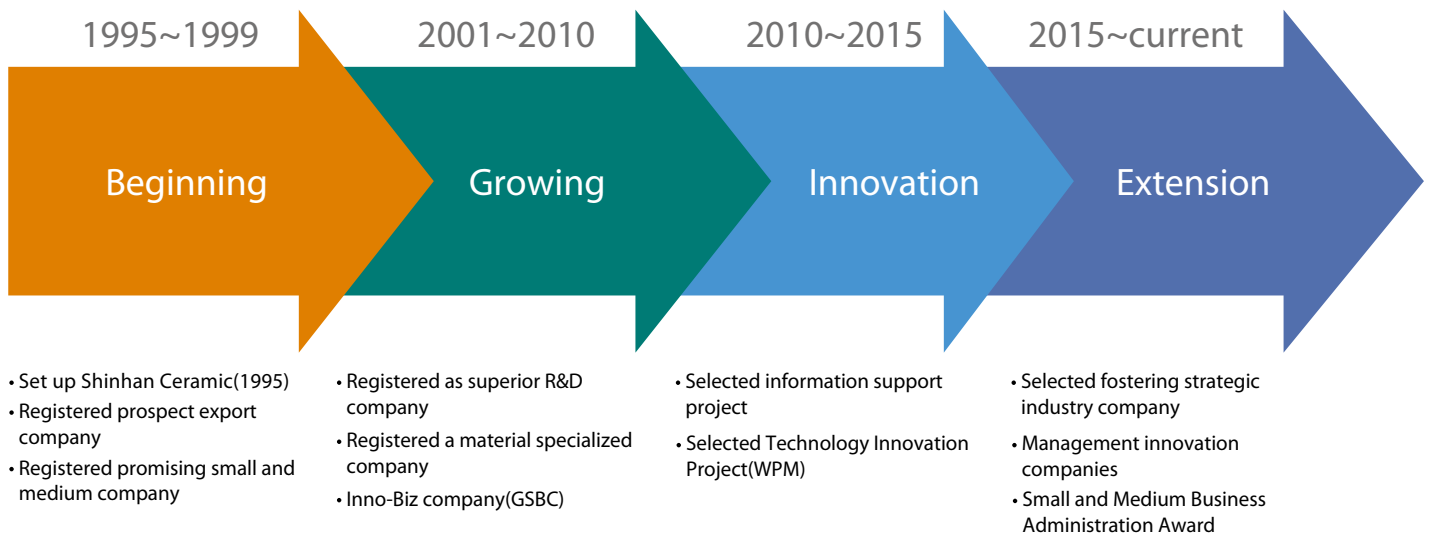
S.C.C. continuously endeavoring to be the best company by world class technology and transparent management.

S.C.C. concentrate Research & Development by continuous challenge mind and creative idea.

S.C.C. who's grown up as a global partner, will make their technology to be world standard as a leading company in ceramic and material provider.

Appreciate of your continuous support and encouragement to S.C.C.

Company History



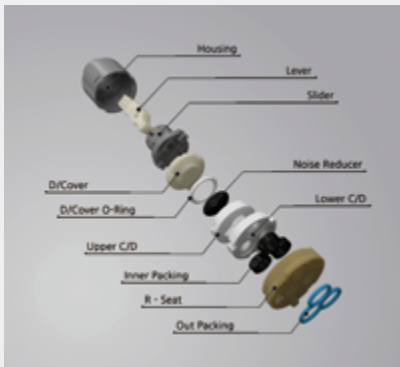
CERAMIC SEAL DISC

S.C.C ceramic discs work marvelously in the ceramic cartridge for sanitary fittings leaving no trouble more than 500,000 cycles use



S.C.C seal disc in oxide ceramics show no measurable wear when used on all kinds of lever and mixers with turning mechanism.

Ceramic disc for ceramic cartridge



Exact control and optimum sealing are ensured for 500,000 cycles operation periods due to the chemical inertness and great hardness of the ceramics.

Single lever mixer containing S.C.C seal disc allows maintenance-free in life time.

Ceramic disc for ceramic headwork



The excellent sliding properties of oxide ceramics are an assurance of trouble-free functioning and good durability

Twin lever mixer containing S.C.C seal disc shows no measurable wear in using 500,000 cycles.

The properties of ceramic seal disc

Density

Density plays an important role because it is related to the wear. The raw material refined by spray dryer is foamed by multiple foaming press.

Flatness

The permanent flatness and smoothness of the disc faces guarantee an excellent sealing performance.

A special characteristics of S.C.C Alumina(SP-96) sealing and control discs are pocket-shaped pores in the sealing faces, which act as lubricant reservoirs and guarantee an uniform lubricant film for easy operation.

Operation life

Test proved that even after 500,000 cycles use S.C.C® cartridge found no obstacle in normal function.

Flatness

S.C.C standard Flatness : $F \leq 0.6 \mu\text{m}$

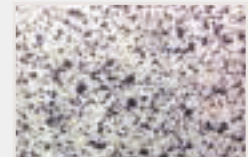


SBA

S.C.C standard range : $50\% \leq \text{SBA} \leq 80\%$



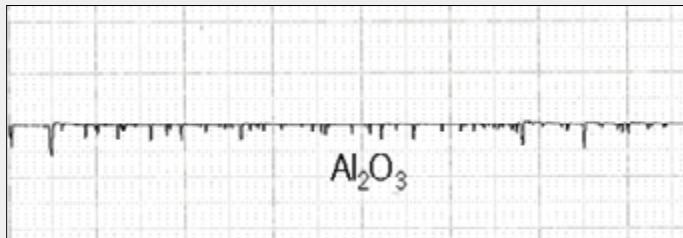
SBA : 64%
Roughne ss : Ra0 .186



SBA : 65%
Roughne ss : Ra0 .154

Roughness

S.C.C standard Roughnes s : $0.1 \leq \text{Ra} \leq 0.3$



Cut off	0.8mm
Tilt cor	FLAT · ML
Length	4.00mm
V-Mag	10000
H-Mag	50
T-Speed	0.3mm/s
Polarity	Positive
Ra	0.16
Rmax	4.04

Material Properties

		SP-96	SP-99.8
Material	%	Al ₂ O ₃ -96	Al ₂ O ₃ -99.8
Density	g/cm ²	3.72	3.94
Water Absorption	%	0	0
Gas Permeabilty	%	0	0
Bending Strength	MPa	330	420
Pressure Resistance	MPa	3400	4000
Modulus of Elasticity	GPa	330	390
Hardness HV 10		1100	1680
Surface Roughness Ra	μm	0.2	0.1
Surface Contact Area Ratio t _a (Optically Measured)	%	$60 \leq t_a \leq 80$	≥ 85
Mean Specific Thermal Capacity (20~100°C)	KJ/kgK	0.9	0.9
Thermal Conductivity (20~100°C)	W/mK	24	28
Coefficient of Linear Expansion (20~200°C)	10 ⁻⁶ K ⁻¹	5.4	6
Thermal Shock Resistance ΔT (Depending on Geometry)	°C	250	200

ENGINEERING FINE CERAMIC

Alumina Ceramic are very valuable as electrical materials because of their insulating strength and small dielectric loss.

As industrial awareness of advanced materials increase, the number and variety of application areas of Engineering Fine Ceramic expands rapidly. Shinhan ceramic receives growing demand every year from various industrial fields because Engineering Fine Ceramics have such excellent properties as heat resistance, light weight, insulation and super hardness.

Main Products

• Ceramic tubes • Surge arrester tubes • Metallized products • Shaft & bearing for pump



Shinhan ceramic produces metallized components offering multiple alloy combinations. Many types of ceramics are amendable to the additions of metallizing coatings.



Some ceramic bodies more readily accept additions than other, The 90~96% Alumina most readily accept any of the refractory metallizing process coatings.

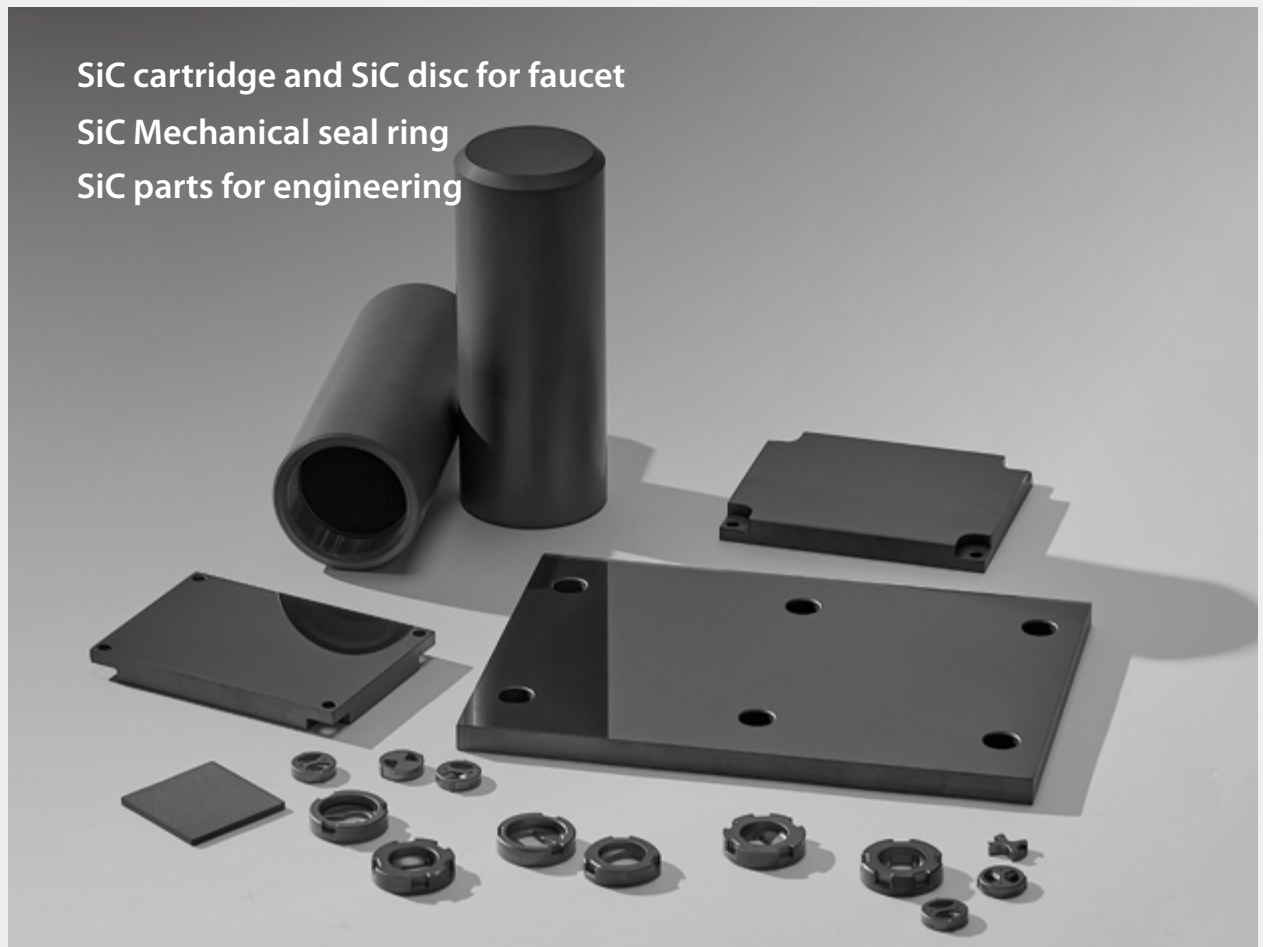


Alumina ceramics are inert and therefore are highly resistant to chemical attack.

In addition, Ceramic is almost unaffected by water, solvents, salt solutions, and molten salt.

The corrosion resistance of high alumina ceramics is generally for superior for superior metals, plastics.

SILICON CARBIDE (SiC)



SiC cartridge and SiC disc for faucet
SiC Mechanical seal ring
SiC parts for engineering

Valve disc, Sliding bearing, Ball media, Armor plate, Heat sink

SiC ceramics are used for high quality which required of high hardness, high wear resistance, low coefficient of friction, high thermal conductivity, chemical resistance, high strength, etc. Its application is for automobiles, oil chemicals, environments, energies, electric-electronics, mechanics, national defenses, etc.

Property	Unit	Value
Density	g/cm ³	3.11~3.15
Purity	%	99.2
Hardness Hv(0.5)	kg/mm ²	2,450
Flexural Strength	MPa	440
Fracture Toughness	MPam ^{1/2}	3.6
Elastic Modulus	GPa	410
Thermal Expansion Coeff.	10 ⁻⁶ /°C	4.4
Thermal Conductivity	W/mK	115



CERAMIC CARTRIDGE

ECO CARTRIDGE(Energy Saving)

It discourages hot water use in favor of energy saving
It flows out only cold water in the middle of handle

WATER SAVING CARTRIDGE

3-STEP, 2-STEP

SIC CARTRIDGE

Silicon Carbide (SiC) improves the durability of cartridge and have self-lubricative

DLC (Diamond like carbone coated) CARTRIDGE

DLC Coating maintains low torque and inside water pressure endurance in the poor water quality enviroment

JOYSTICK CARTRIDGE

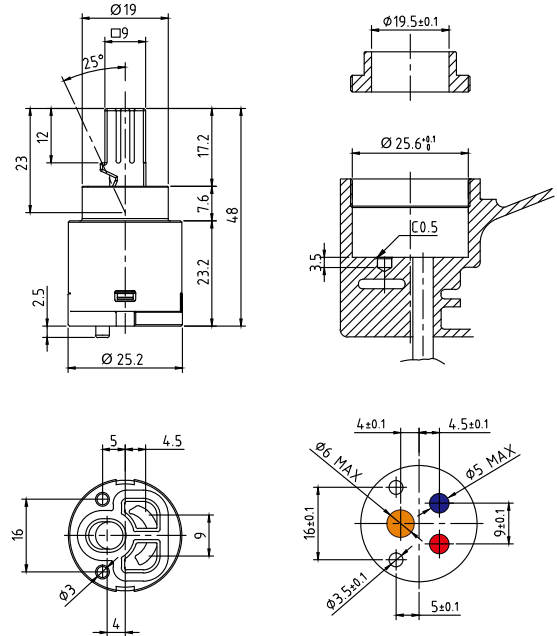
It applied basic design method of lever innovatively, so it can be adapted to various kinds of faucets

SCC 25SR

25mm Ceramic Cartridge



Dimensions (mm)



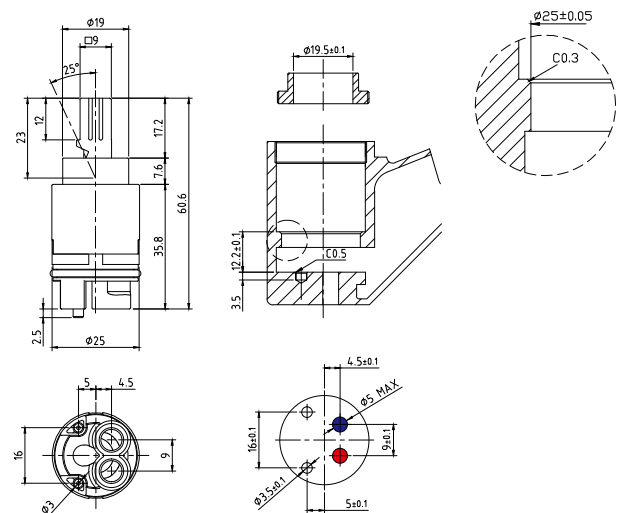
Max. Opening Angle	25°	
Max. Turning Angle	100°	
Nut Torque	8 ~ 9 Nm	
Water Resistance Pressure	Max. 25bar	
Working Torque	Max. 0.5 Nm	
Max. Temperature	90°C	
Max. Noise Level	15 ~ 18db	
Flow Rate	(at 1bar)	6.8~7.5 l/min
	(at 2bar)	8.8~9.4 l/min
	(at 3bar)	10.5~11.0 l/min
Endurance Test	500,000 times	

SCC 25SF

25mm Ceramic Cartridge



Dimensions (mm)



Max. Opening Angle	25°	
Max. Turning Angle	100°	
Nut Torque	8 ~ 9 Nm	
Water Resistance Pressure	Max. 25bar	
Working Torque	Max. 0.5 Nm	
Max. Temperature	90°C	
Max. Noise Level	15 ~ 18db	
Flow Rate	(at 1bar)	6.8~7.5 l/min
	(at 2bar)	8.8~9.4 l/min
	(at 3bar)	10.5~11.0 l/min
Endurance Test	500,000 times	

S.C.C CARTRIDGE

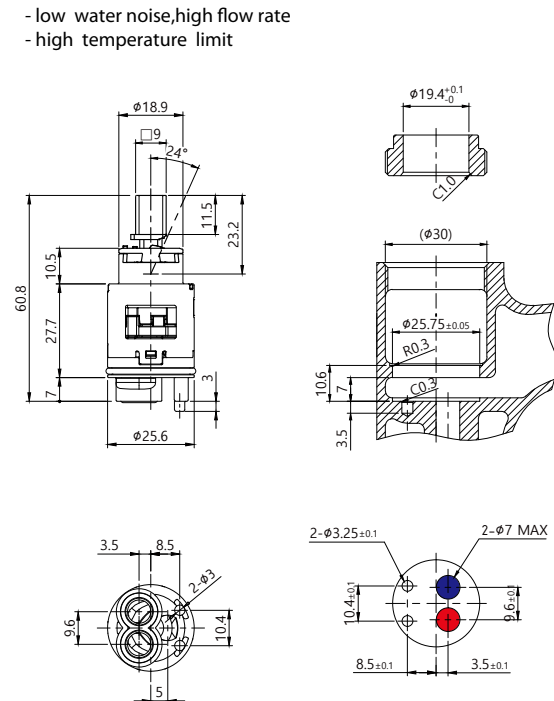
SCC 25SMJF

25mm Ceramic Cartridge



Max. Opening Angle	24°	
Max. Turning Angle	90°	
Nut Torque	8 ~ 9 Nm	
Water Resistance Pressure	Max. 35 bar	
Working Torque	Max. 0.5 Nm	
Max. Temperature	90°C	
Flow Rate	(at 1bar)	7~14 ℓ/min
	(at 2bar)	9~18 ℓ/min
	(at 3bar)	13~25 ℓ/min
Endurance Test	500,000 times	

Dimensions (mm)



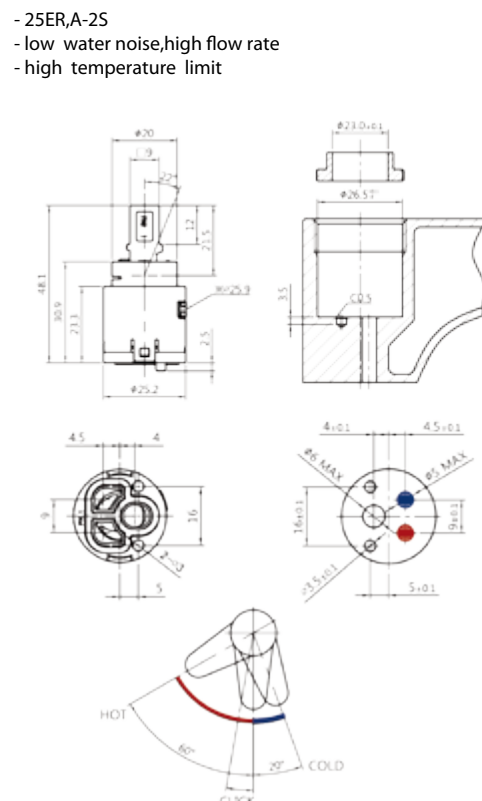
SCC 25ER,A

25mm Ceramic ECO Cartridge



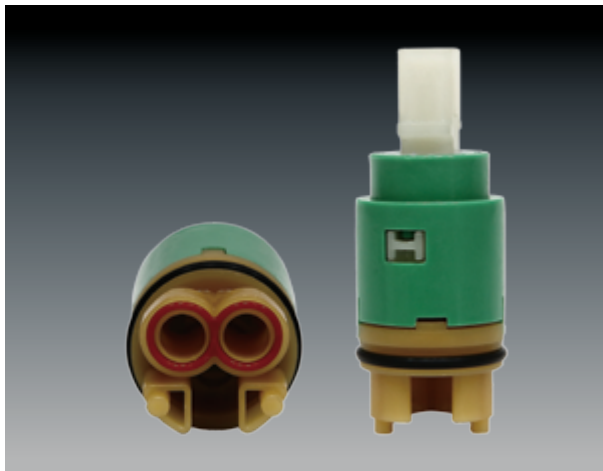
Max. Opening Angle	22°	
Max. Turning Angle	60°/20°	
Nut Torque	8 ~ 9 Nm	
Water Resistance Pressure	Max. 35bar	
Working Torque	Max. 0.5 Nm	
Max. Temperature	90°C	
Max. Noise Level	15 ~ 18db	
Flow Rate	(at 1bar)	5.0~6.0 ℓ/min
	(at 2bar)	8.0~9.0 ℓ/min
	(at 3bar)	10.0~11.0 ℓ/min
Endurance Test	500,000 times	

Dimensions (mm)



SCC 25EF,A

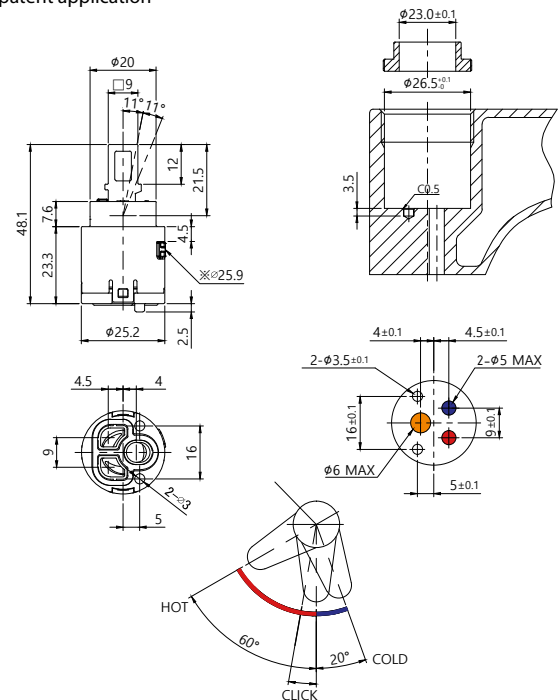
25mm Ceramic ECO Cartridge



Max. Opening Angle	22°	
Max. Turning Angle	60°/20°	
Nut Torque	8 ~ 9 Nm	
Water Resistance Pressure	Max. 35bar	
Working Torque	Max. 0.5 Nm	
Max. Temperature	90°C	
Max. Noise Level	15 ~ 18db	
Flow Rate	(at 1bar)	5.0~6.0 l/min
	(at 2bar)	8.0~9.0 l/min
	(at 3bar)	10.0~11.0 l/min
Endurance Test (EN-817)	500,000 times	

Dimensions (mm)

- 25ER,A-2S step function
- save water, save hot water
- SOFTMOVE
- patent application



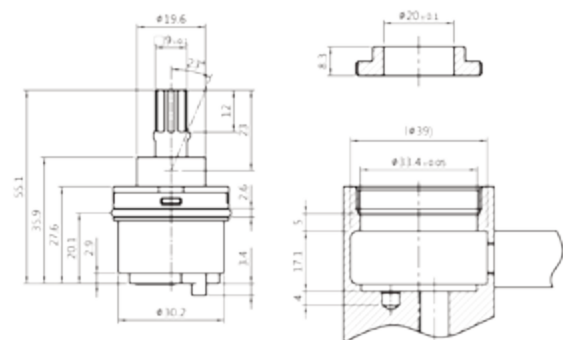
SCC 25QR

25mm Ceramic Cartridge



Max. Opening Angle	23°	
Max. Turning Angle	45°/45°	
Nut Torque	10 ~ 11 Nm	
Water Resistance Pressure	Max. 35bar	
Working Torque	Max. 0.5 Nm	
Max. Temperature	90°C	
Max. Noise Level	15 ~ 18db	
Flow Rate	(at 1bar)	8.0~9.0 l/min
	(at 2bar)	13.0~14.0 l/min
	(at 3bar)	17.0~18.0 l/min
Endurance Test (EN-817)	500,000 times	

Dimensions (mm)



S.C.C CARTRIDGE

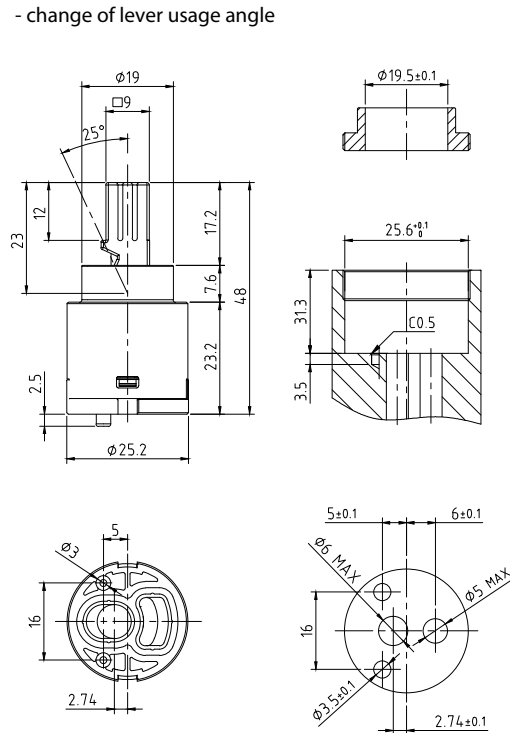
SCC 25NR

25mm Ceramic Cartridge(ON/OFF)



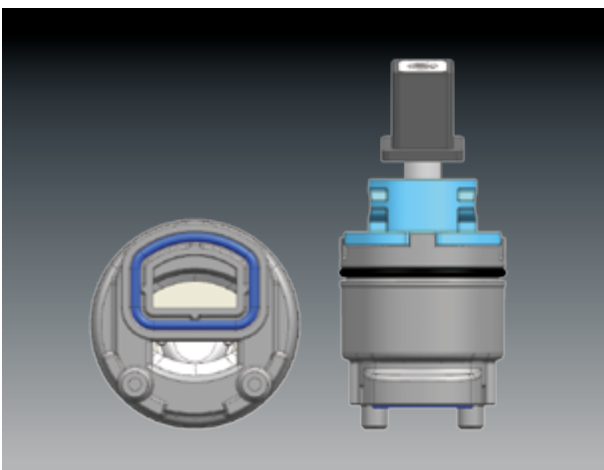
Max. Opening Angle	25°	
Nut Torque	8 ~ 9 Nm	
Water Resistance Pressure	Max. 25bar	
Working Torque	Max. 0.5 Nm	
Max. Temperature	90°C	
Max. Noise Level	15 ~ 18db	
Flow Rate	(at 1bar)	9 ℓ/min
	(at 2bar)	13 ℓ/min
	(at 3bar)	16 ℓ/min
Endurance Test	500,000 times	

Dimensions (mm)



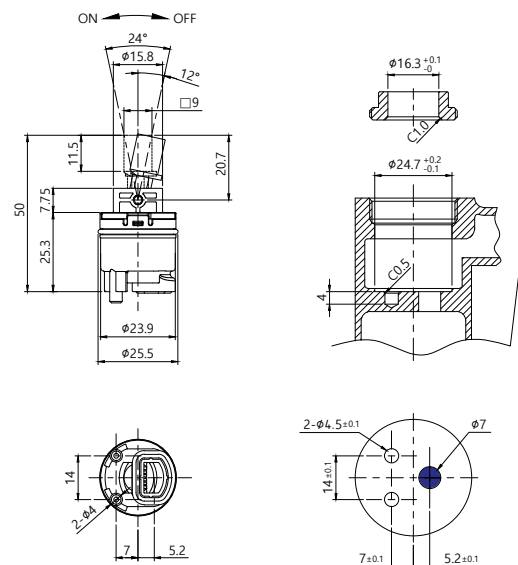
SCC 25NJF

25mm Ceramic Cartridge(ON/OFF)



Max. Opening Angle	24°	
Max. Turning Angle		
Nut Torque	8 ~ 9 Nm	
Water Resistance Pressure		
Working Torque	Max. 0.5 Nm	
Max. Temperature		
Flow Rate	(at 1bar)	11ℓ/min
	(at 2bar)	15 ℓ/min
	(at 3bar)	18.5 ℓ/min
Endurance Test(EN-817)		

Dimensions (mm)

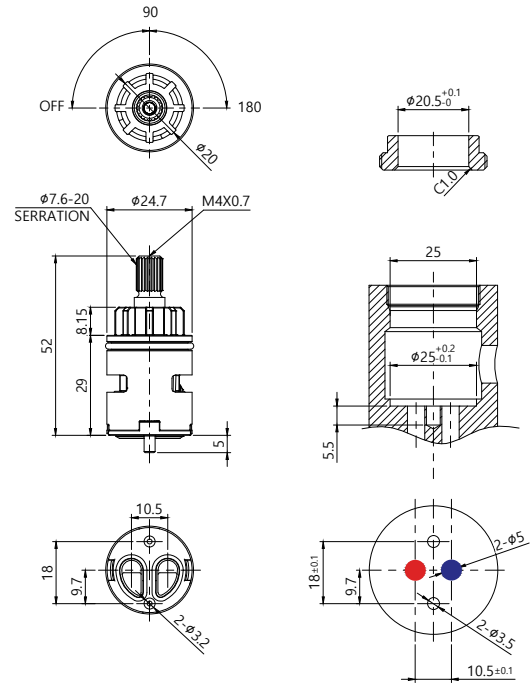


SCC 25VJR

25mm Ceramic Volume Type Cartridge



Dimensions (mm)



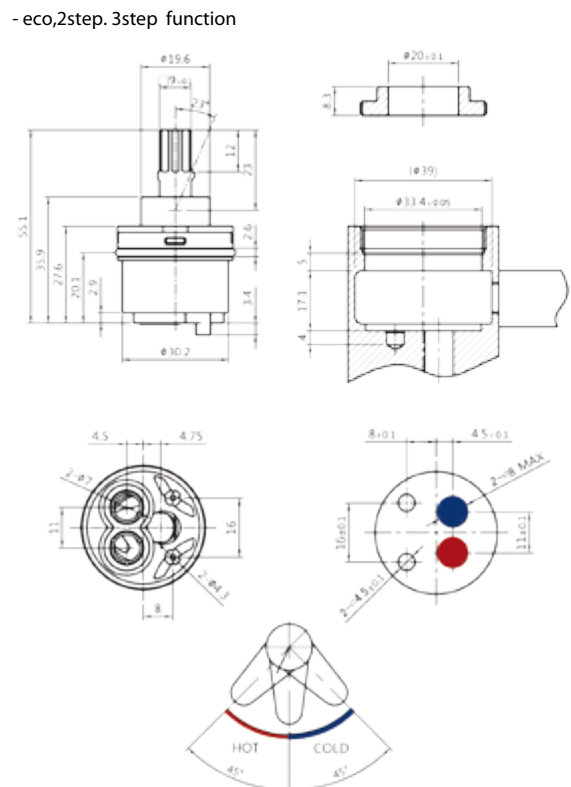
Max. Opening Angle	
Max. Turning Angle	
Nut Torque	
Water Resistance Pressure	
Working Torque	
Max. Temperature	
Flow Rate	(at 1bar)
	(at 2bar)
	(at 3bar)
Endurance Test(EN-817)	

SCC 33AF

35mm Ceramic Cartridge



Dimensions (mm)



Max. Opening Angle		23°
Max. Turning Angle		45°/45°
Nut Torque		10 ~ 11 Nm
Water Resistance Pressure		Max. 35bar
Working Torque		Max. 0.5 Nm
Max. Temperature		90°C
Max. Noise Level		15 ~ 18db
Flow Rate	(at 1bar)	8.0~9.0 ℓ/min
	(at 2bar)	13.0~14.0 ℓ/min
	(at 3bar)	17.0~18.0 ℓ/min
Endurance Test		500,000 times

S.C.C CARTRIDGE

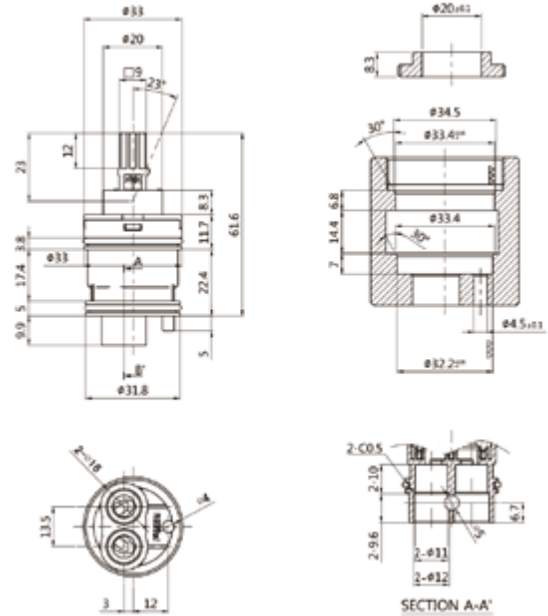
SCC 33AF-H 33mm Ceramic Cartridge



Max. Opening Angle	23°	
Max. Turning Angle	90°	
Nut Torque	10 ~ 11 Nm	
Water Resistance Pressure	Max. 35bar	
Working Torque	Max. 0.5 Nm	
Max. Temperature	90°C	
Max. Noise Level	15 ~ 18db	
Flow Rate	(at 1bar)	7.5~8.5 l/min
	(at 2bar)	11.0~12.0 l/min
	(at 3bar)	14.0~15.0 l/min
Endurance Test (EN-817)	500,000 times	

Dimensions (mm)

-eco,2step.3step function

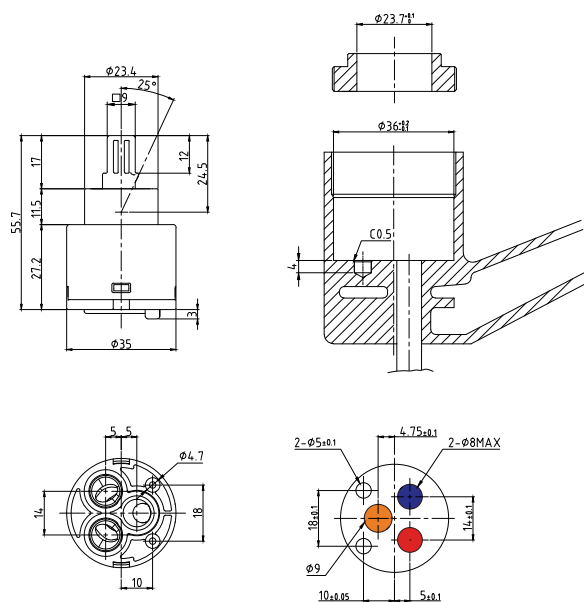


SCC 35GR 35mm Ceramic Cartridge



Max. Opening Angle	25°	
Max. Turning Angle	90°	
Nut Torque	10 ~ 11 Nm	
Water Resistance Pressure	Max. 35bar	
Working Torque	Max. 0.5 Nm	
Max. Temperature	90°C	
Max. Noise Level	15 ~ 18db	
Flow Rate	(at 1bar)	12~13 l/min
	(at 2bar)	17~19 l/min
	(at 3bar)	20~28 l/min
Endurance Test	500,000 times	

Dimensions (mm)



Polycarbonate material available

SCC 35GF

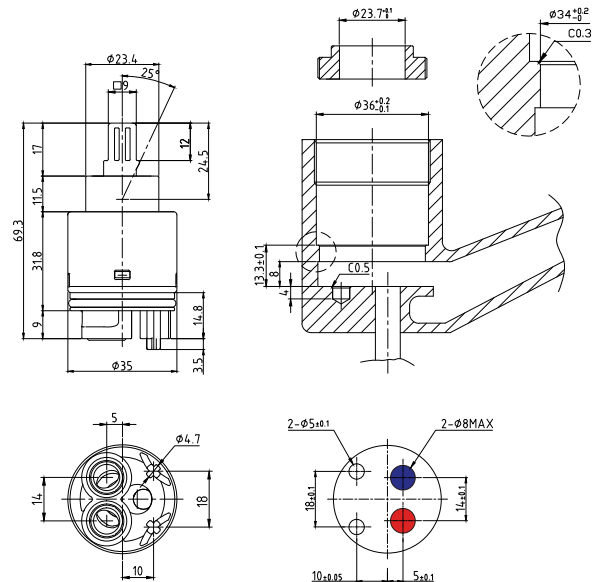
35mm Ceramic Cartridge



Max. Opening Angle	25°	
Max. Turning Angle	90°	
Nut Torque	10 ~ 11 Nm	
Water Resistance Pressure	Max. 35bar	
Working Torque	Max. 0.5 Nm	
Max. Temperature	90°C	
Max. Noise Level	15 ~ 18db	
Flow Rate	(at 1bar)	12~13 ℓ/min
	(at 2bar)	17~19 ℓ/min
	(at 3bar)	20~ 28 ℓ/min
Endurance Test	500,000 times	

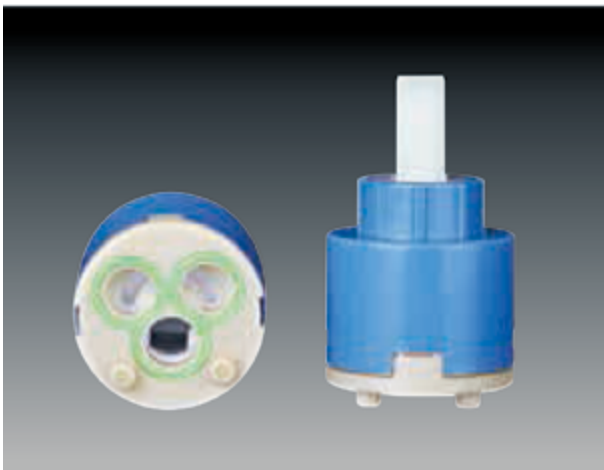
Polycapton material available

Dimensions (mm)



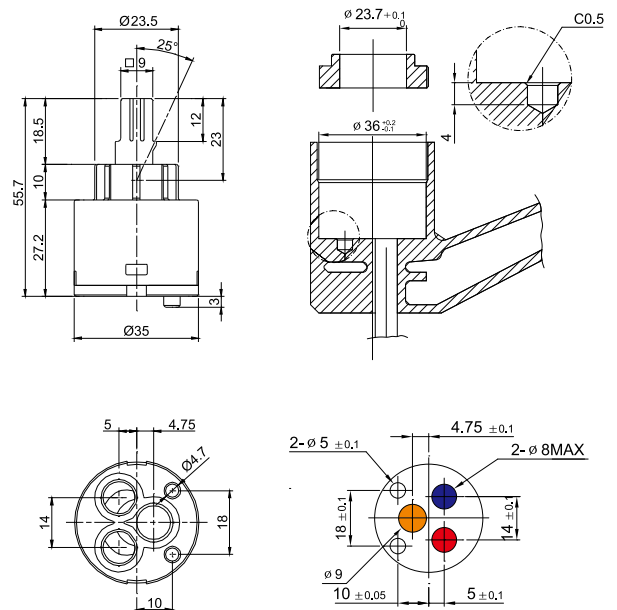
SCC 35SR

35mm Ceramic Cartridge



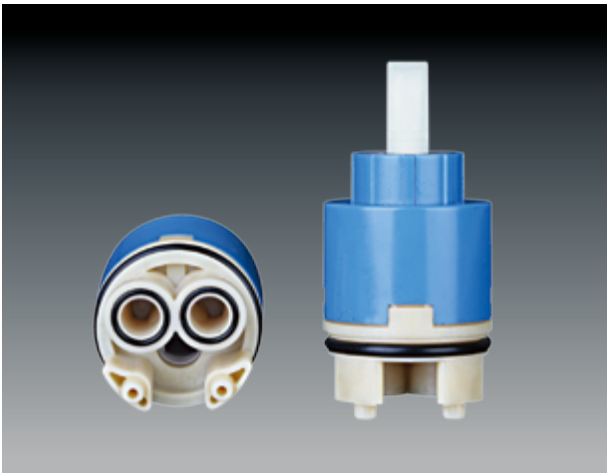
Max. Opening Angle	25°	
Max. Turning Angle	100°	
Nut Torque	10 ~ 11 Nm	
Water Resistance Pressure	Max. 35bar	
Working Torque	Max. 0.5 Nm	
Max. Temperature	90°C	
Max. Noise Level	15 ~ 18db	
Flow Rate	(at 1bar)	12~13 ℓ/min
	(at 2bar)	17~19 ℓ/min
	(at 3bar)	20~28 ℓ/min
Endurance Test	500,000 times	

Dimensions (mm)



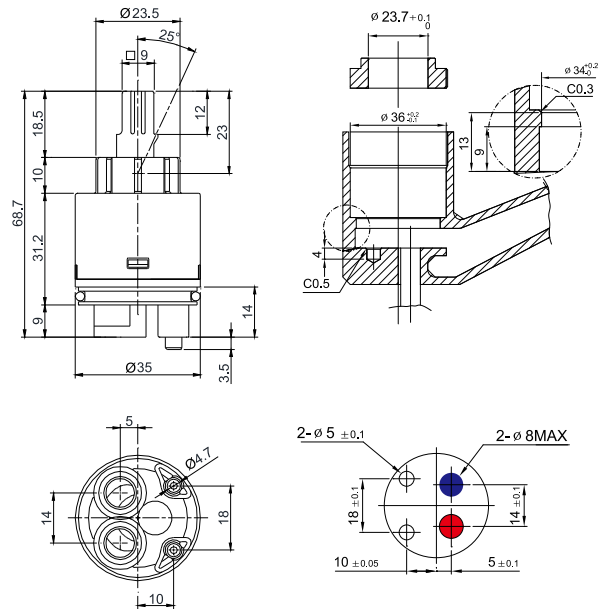
S.C.C CARTRIDGE

SCC 35SF 35mm Ceramic Cartridge

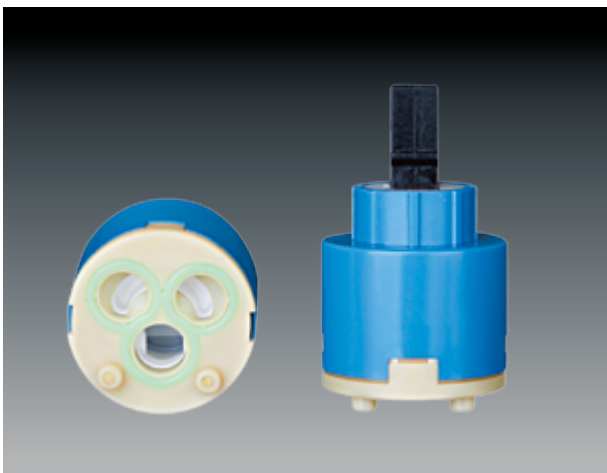


Max. Opening Angle	25°	
Max. Turning Angle	100°	
Nut Torque	10 ~ 11 Nm	
Water Resistance Pressure	Max. 35bar	
Working Torque	Max. 0.5 Nm	
Max. Temperature	90°C	
Max. Noise Level	15 ~ 18db	
Flow Rate	(at 1bar)	12~13 l/min
	(at 2bar)	17~19 l/min
	(at 3bar)	20~28 l/min
Endurance Test	500,000 times	

Dimensions (mm)

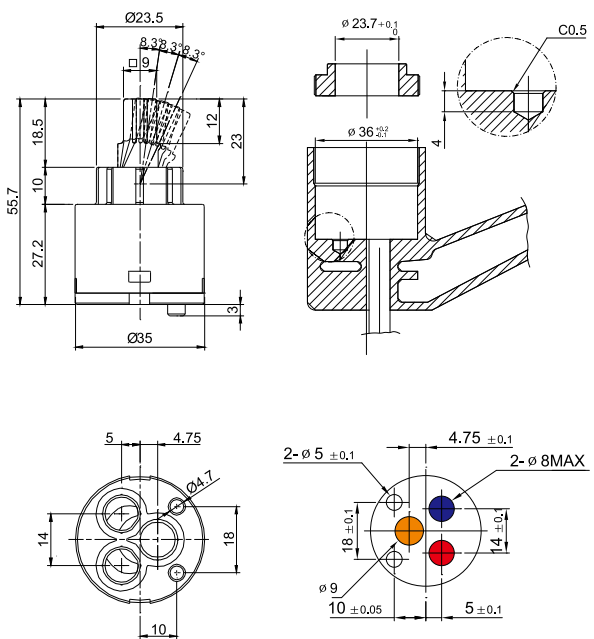


SCC 35SR-3S 35mm Ceramic Cartridge (3step)



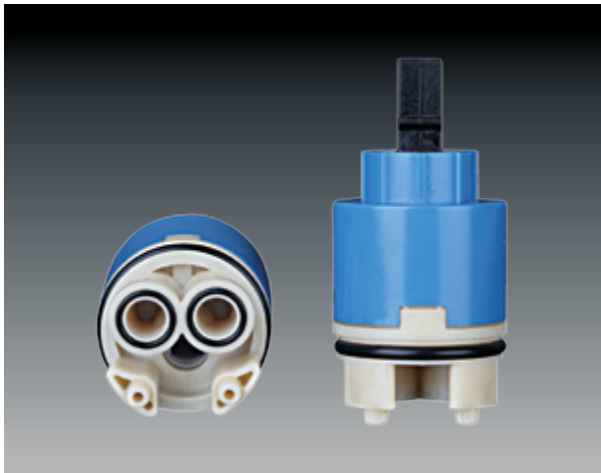
Max. Opening Angle	25°	
Max. Turning Angle	100°	
Nut Torque	10 ~ 11 Nm	
Water Resistance Pressure	Max. 35bar	
Working Torque	Max. 0.5 Nm	
Max. Temperature	90°C	
Max. Noise Level	15 ~ 18db	
Flow Rate	(at 1bar)	12~13 l/min
	(at 2bar)	17~19 l/min
	(at 3bar)	20~28 l/min
Endurance Test	500,000 times	

Dimensions (mm)



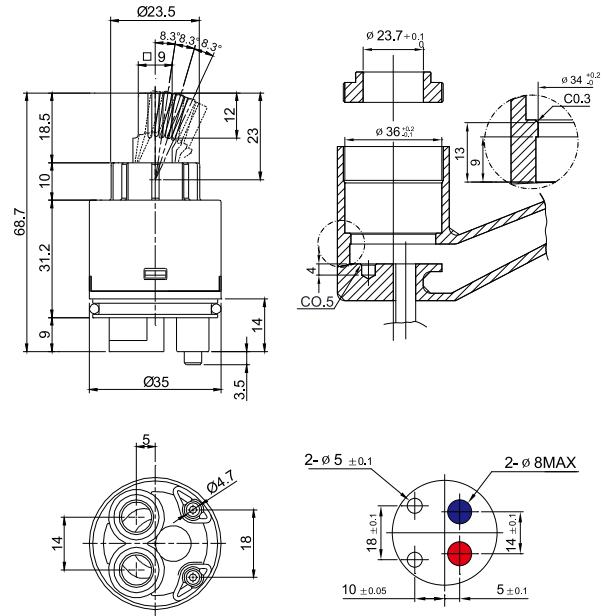
SCC 35SF-3S

35mm Ceramic Cartridge (3step)



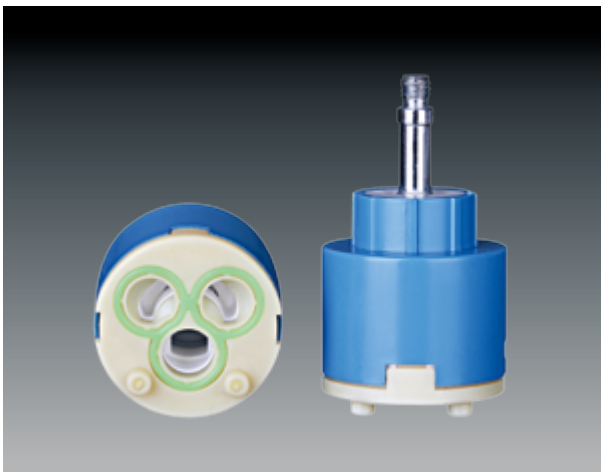
Max. Opening Angle	25°	
Max. Turning Angle	100°	
Nut Torque	10 ~ 11 Nm	
Water Resistance Pressure	Max. 35bar	
Working Torque	Max. 0.5 Nm	
Max. Temperature	90°C	
Max. Noise Level	15 ~ 18db	
Flow Rate	(at 1bar)	12~13 l/min
	(at 2bar)	17~19 l/min
	(at 3bar)	20~28 l/min
Endurance Test	500,000 times	

Dimensions (mm)



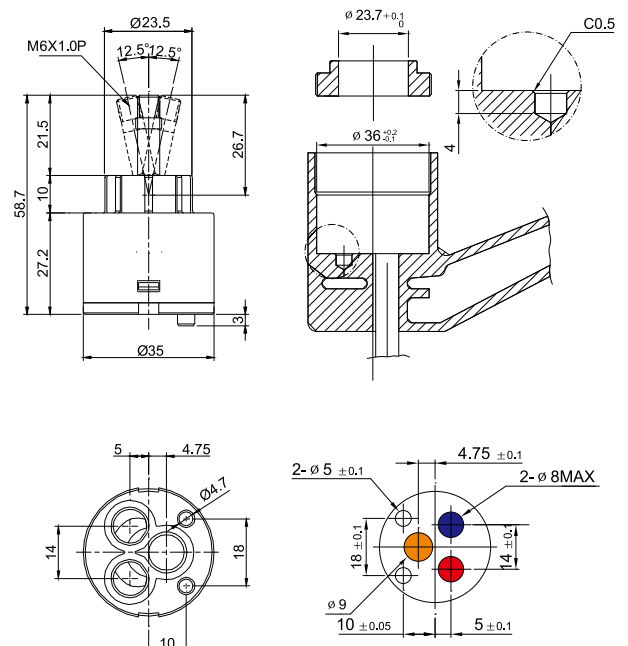
SCC 35JR

35mm Ceramic Cartridge (Joystick)



Max. Opening Angle	25°	
Max. Turning Angle	360°	
Nut Torque	10 ~ 11 Nm	
Water Resistance Pressure	Max. 35bar	
Working Torque	Max. 0.5 Nm	
Max. Temperature	90°C	
Max. Noise Level	15 ~ 18db	
Flow Rate	(at 1bar)	12~13 l/min
	(at 2bar)	17~19 l/min
	(at 3bar)	20~28 l/min
Endurance Test	500,000 times	

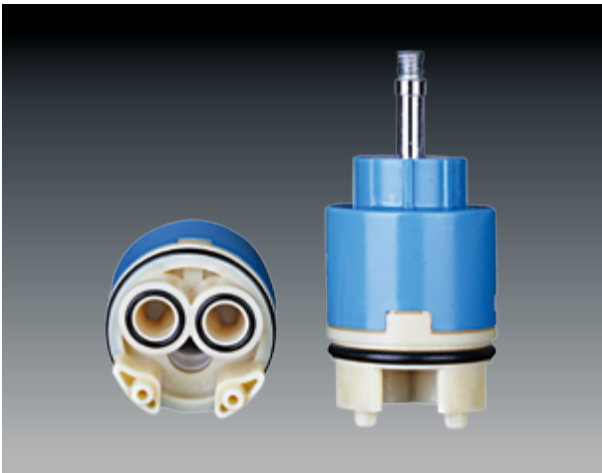
Dimensions (mm)



S.C.C CARTRIDGE

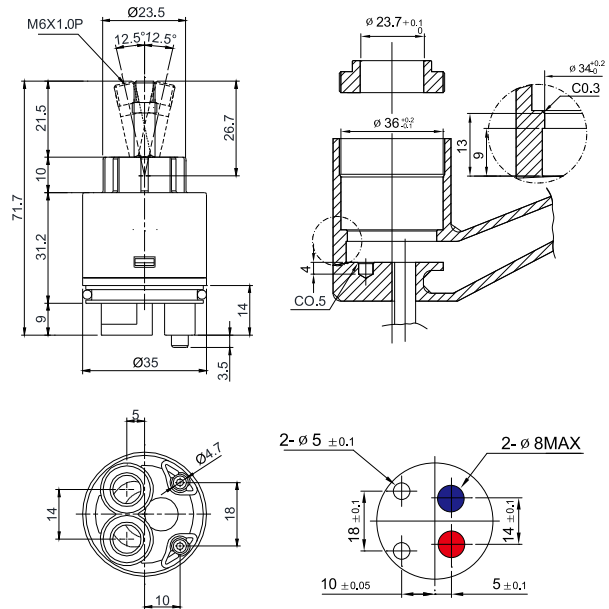
SCC 35JF

35mm Ceramic Cartridge (joystick)



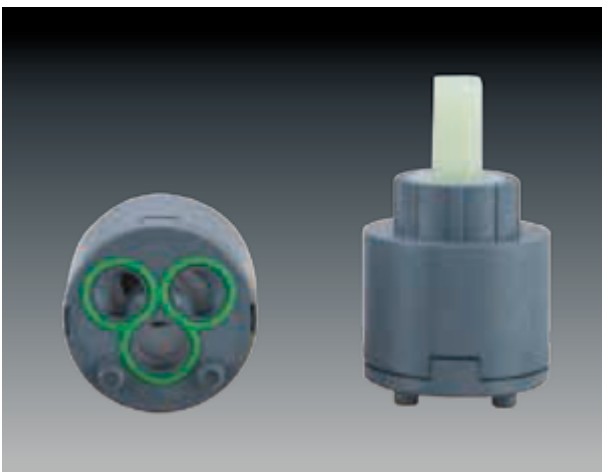
Max. Opening Angle	25°	
Max. Turning Angle	360°	
Nut Torque	10 ~ 11 Nm	
Water Resistance Pressure	Max. 35bar	
Working Torque	Max. 0.5 Nm	
Max. Temperature	90°C	
Max. Noise Level	15 ~ 18db	
Flow Rate	(at 1bar)	12~13 l/min
	(at 2bar)	17~19 l/min
	(at 3bar)	20~28 l/min
Endurance Test	500,000 times	

Dimensions (mm)



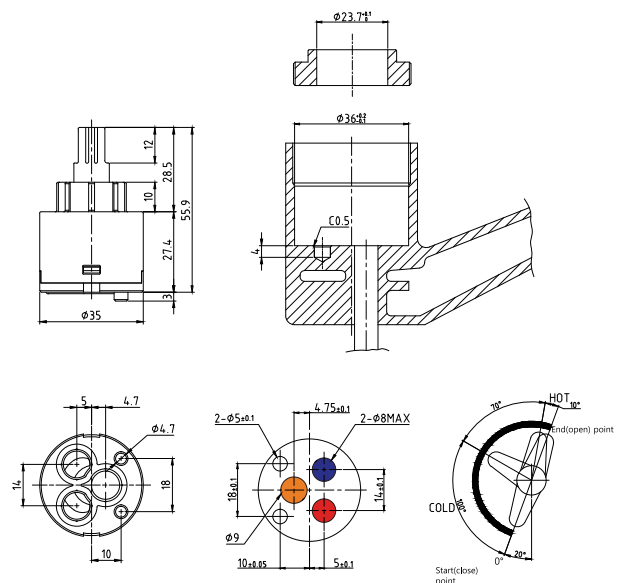
SCC 35VR

35mm Ceramic Volume Cartridge



Max. Opening Angle	180°	
Nut Torque	10 ~ 11 Nm	
Water Resistance Pressure	Max. 35bar	
Working Torque	Max. 0.5 Nm	
Max. Temperature	90°C	
Max. Noise Level	15 ~ 18db	
Flow Rate	(at 1bar)	12~13 l/min
	(at 2bar)	17~19 l/min
	(at 3bar)	20~28 l/min
Endurance Test	500,000 times	

Dimensions (mm)



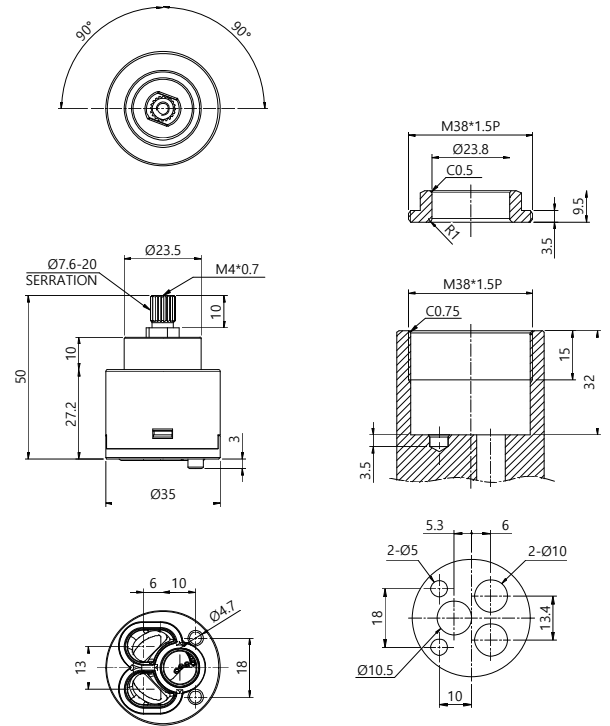
SCC 35VJR

35mm Ceramic Volume Type Cartridge



Max. Turning Angle	180°	
Nut Torque	100 ~ 110 Nm	
Water Resistance Pressure	Max. 17.5 bar	
Working Torque	Max. 0.5 Nm	
Max. Temperature	90°C	
Flow Rate	(at 1bar)	12~14 ℓ/min
	(at 2bar)	17~23 ℓ/min
	(at 3bar)	24~29 ℓ/min
Endurance Test	500,000 times	

Dimensions (in mm)



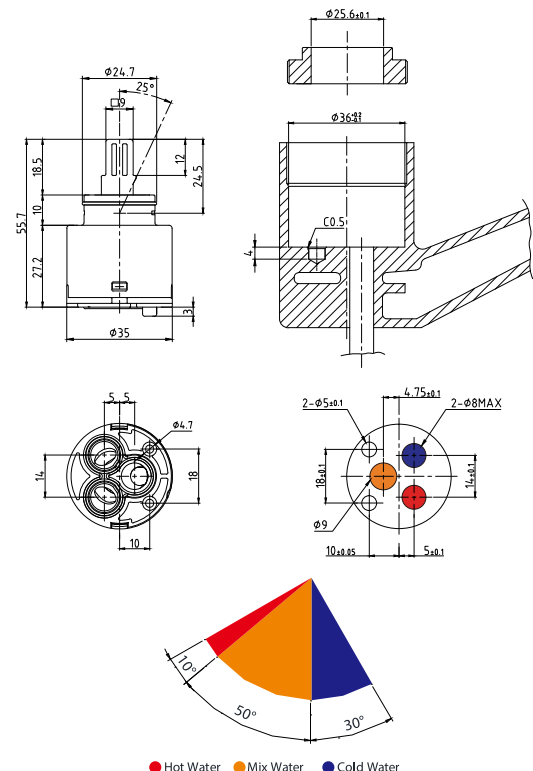
SCC 35ER

35mm Eco Ceramic Cartridge



Max. Opening Angle	25°	
Max. Turning Angle	60°/30°	
Nut Torque	10 ~ 11 Nm	
Water Resistance Pressure	Max. 35bar	
Working Torque	Max. 0.5 Nm	
Max. Temperature	90°C	
Max. Noise Level	15 ~ 18db	
Flow Rate	(at 1bar)	7.5~8.5 ℓ/min
	(at 2bar)	10.5~12 ℓ/min
	(at 3bar)	13.5~15 ℓ/min
Endurance Test	500,000 times	

Dimensions (mm)



● Hot Water ● Mix Water ● Cold Water

S.C.C CARTRIDGE

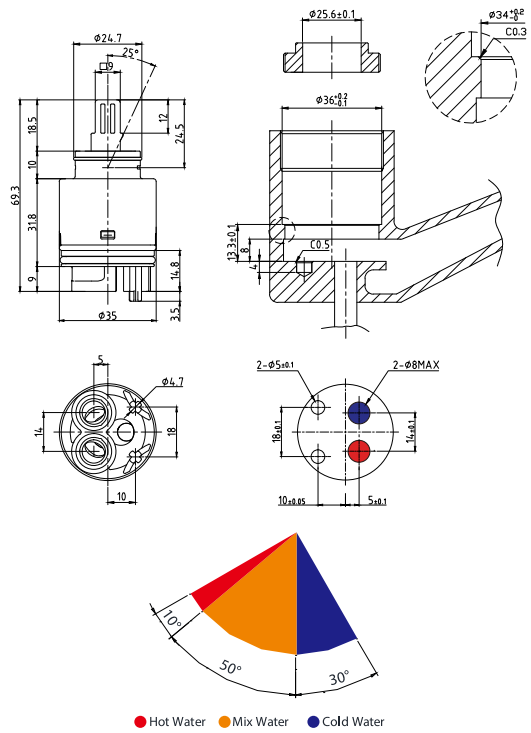
SCC 35EF

35mm Eco Ceramic Cartridge



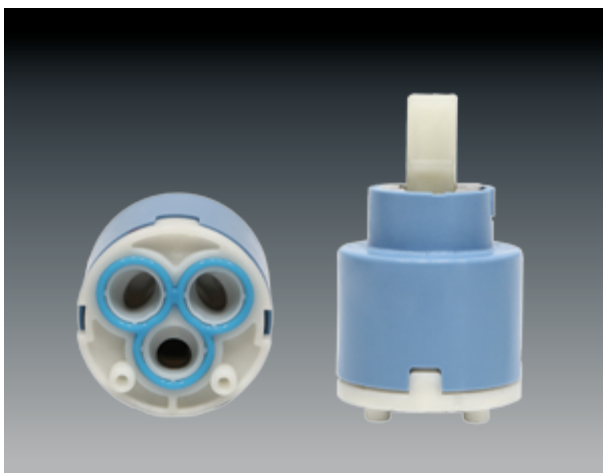
Max. Opening Angle	25°	
Max. Turning Angle	60°/30°	
Nut Torque	10 ~ 11 Nm	
Water Resistance Pressure	Max. 35bar	
Working Torque	Max. 0.5 Nm	
Max. Temperature	90°C	
Max. Noise Level	15 ~ 18db	
Flow Rate	(at 1bar)	7.5~8.5 ℓ/min
	(at 2bar)	10.5~12 ℓ/min
	(at 3bar)	13.5~15 ℓ/min
Endurance Test	500,000 times	

Dimensions (mm)



SCC 35ER,A

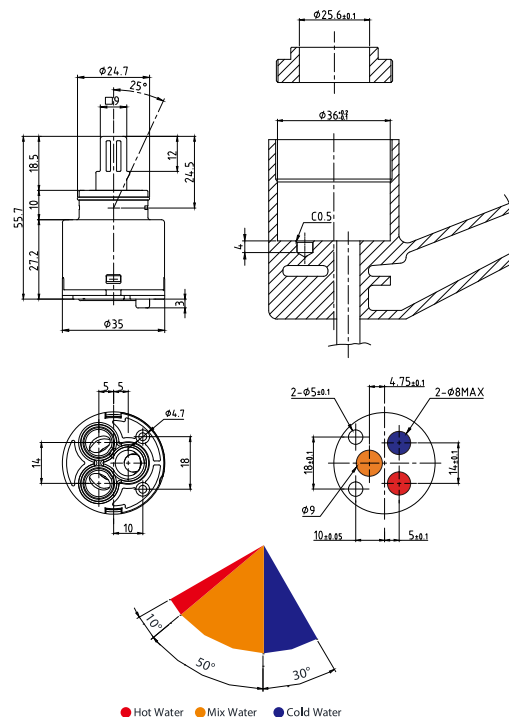
35mm Eco Ceramic Cartridge



Max. Opening Angle	25°	
Max. Turning Angle	60°/30°	
Nut Torque	10 ~ 11 Nm	
Water Resistance Pressure	Max. 35bar	
Working Torque	Max. 0.5 Nm	
Max. Temperature	90°C	
Max. Noise Level	15 ~ 18db	
Flow Rate	(at 1bar)	7.5~8.5 ℓ/min
	(at 2bar)	10.5~12 ℓ/min
	(at 3bar)	13.5~15 ℓ/min
Endurance Test	500,000 times	

Dimensions (mm)

- 35MR-2S/3S 2step. 3step function
- high temperature limit



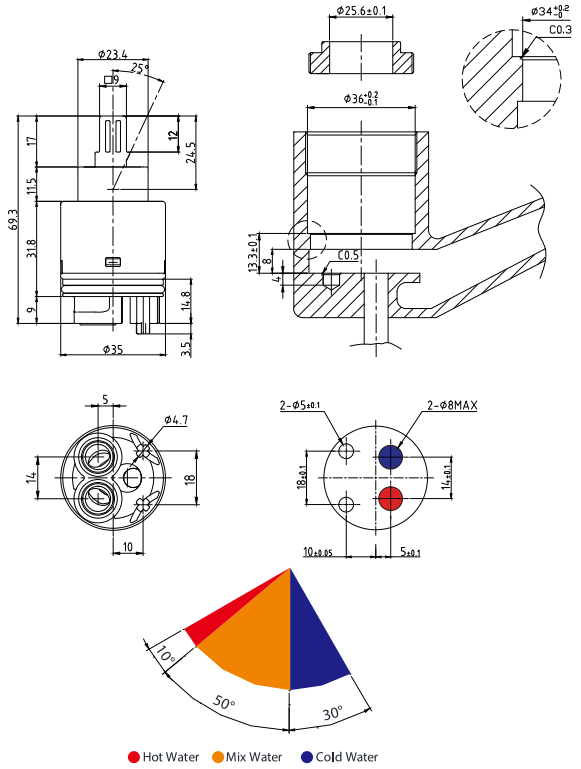
SCC 35EF,A

35mm Ceramic Cartridge



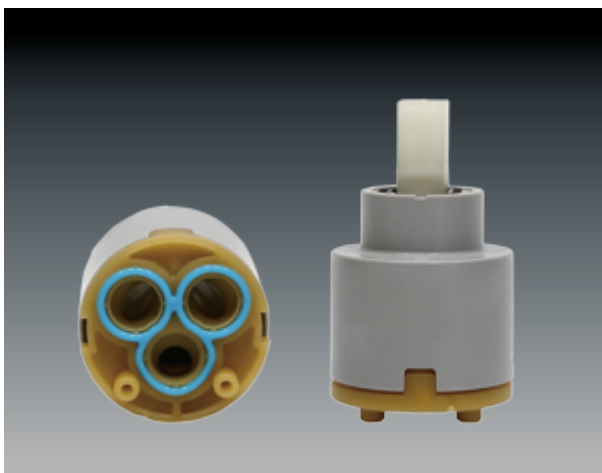
Max. Opening Angle	25°	
Max. Turning Angle	60°/30°	
Nut Torque	10 ~ 11 Nm	
Water Resistance Pressure	Max. 35bar	
Working Torque	Max. 0.5 Nm	
Max. Temperature	90°C	
Max. Noise Level	15 ~ 18db	
Flow Rate	(at 1bar)	7.5~8.5 ℓ/min
	(at 2bar)	10.5~12 ℓ/min
	(at 3bar)	13.5~15 ℓ/min
Endurance Test	500,000 times	

Dimensions (mm)



SCC 35MR

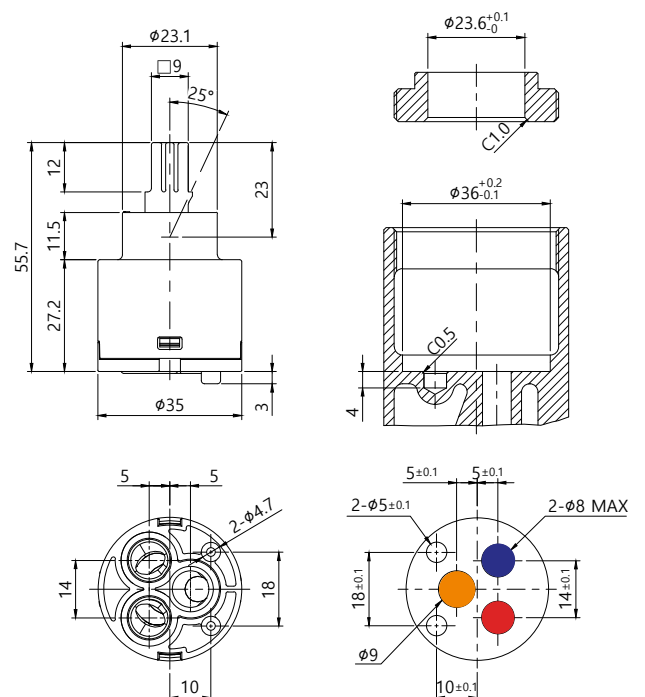
35mm Ceramic Cartridge



Max. Opening Angle	25°	
Max. Turning Angle	90°	
Nut Torque	10 ~ 11 Nm	
Water Resistance Pressure	Max. 35bar	
Working Torque	Max. 0.5 Nm	
Max. Temperature	90°C	
Max. Noise Level	15 ~ 18db	
Flow Rate	(at 1bar)	12~13 ℓ/min
	(at 2bar)	17~19 ℓ/min
	(at 3bar)	20~28 ℓ/min
Endurance Test	500,000 times	

Dimensions (mm)

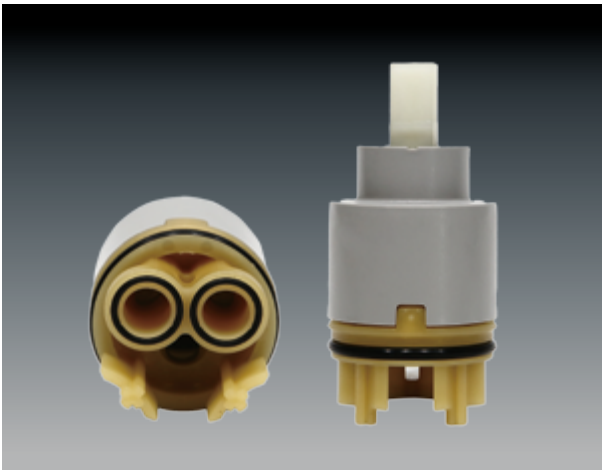
- 35MR-2S/3S 2step. 3step function



S.C.C CARTRIDGE

SCC 35MF

35mm Ceramic Cartridge

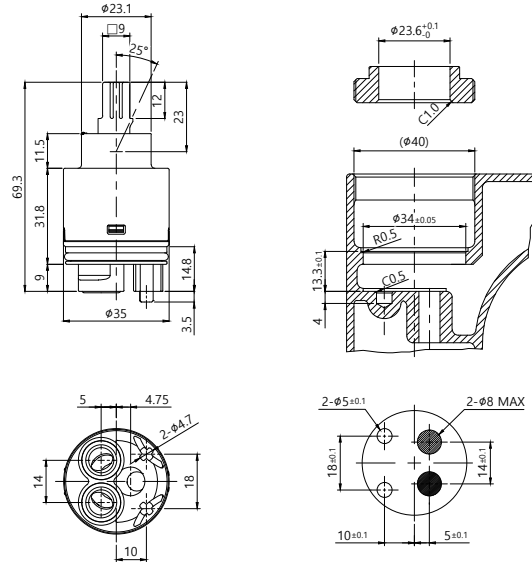


Max. Opening Angle	25°	
Max. Turning Angle	90°	
Nut Torque	10 ~ 11 Nm	
Water Resistance Pressure	Max. 35bar	
Working Torque	Max. 0.5 Nm	
Max. Temperature	90°C	
Max. Noise Level	15 ~ 18db	
Flow Rate	(at 1bar)	12~13 l/min
	(at 2bar)	17~19 l/min
	(at 3bar)	20~ 28 l/min
Endurance Test	500,000 times	

Polycapton material available

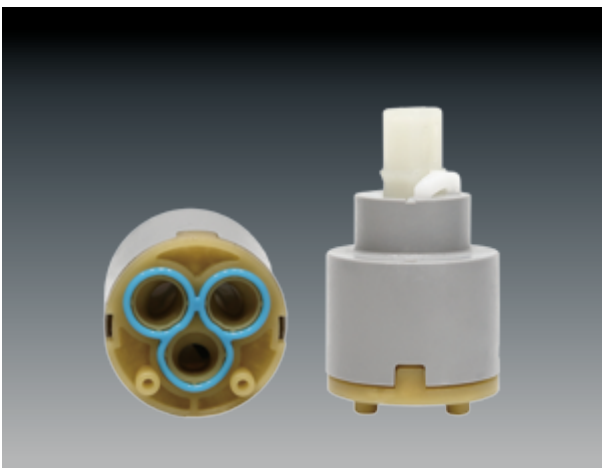
Dimensions (mm)

- 35MF-25/35° 2step. 3step function



SCC 35MZ

35mm Ceramic Cartridge

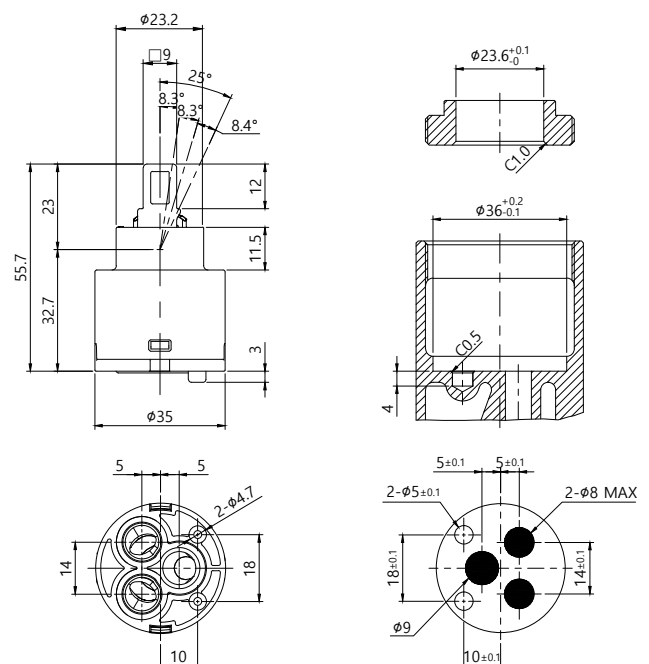


Max. Opening Angle	25°	
Max. Turning Angle	90°	
Nut Torque	10 ~ 11 Nm	
Water Resistance Pressure	Max. 35bar	
Working Torque	Max. 0.5 Nm	
Max. Temperature	90°C	
Max. Noise Level	15 ~ 18db	
Flow Rate	(at 1bar)	12~13 l/min
	(at 2bar)	17~19 l/min
	(at 3bar)	20~28 l/min
Endurance Test	500,000 times	

Polycapton material available

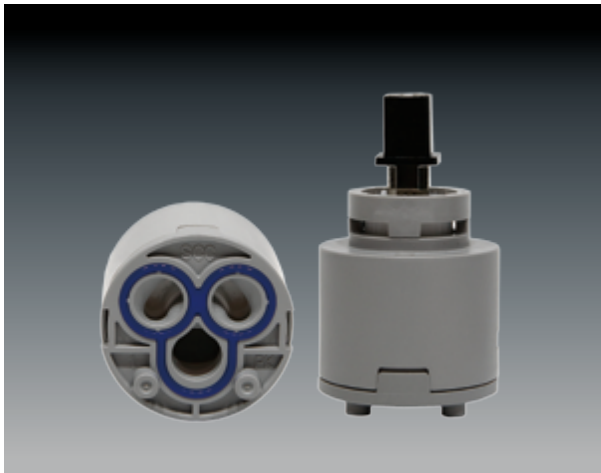
Dimensions (mm)

- 35MZ-35° 3step function



SCC 35SMJR

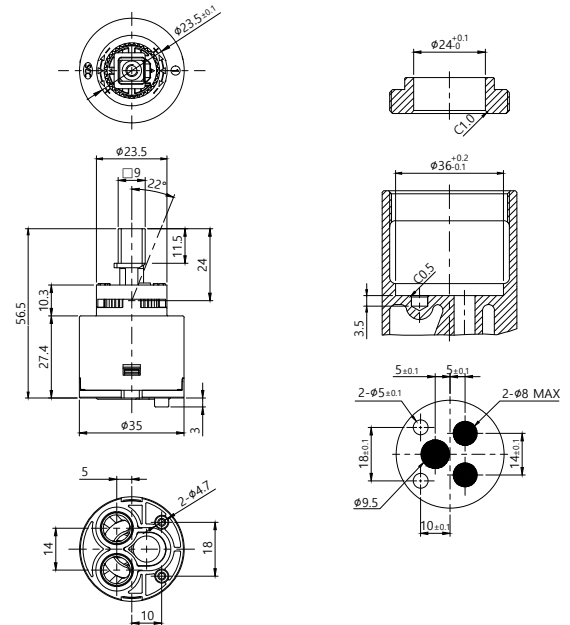
35MM Ceramic Cartridge



Max. Opening Angle	22°	
Max. Turning Angle	90°	
Nut Torque	8 ~ 10 Nm	
Water Resistance Pressure	Max. 25bar	
Working Torque	Max. 0.5 Nm	
Max. Temperature	90°C	
Flow Rate	(at 1bar)	14~18 l/min
	(at 2bar)	20~26 l/min
	(at 3bar)	25~31 l/min
Endurance Test (EN-817)	500,000 times	

Dimensions (mm)

- low water noise, high flow rate



SCC 35QR

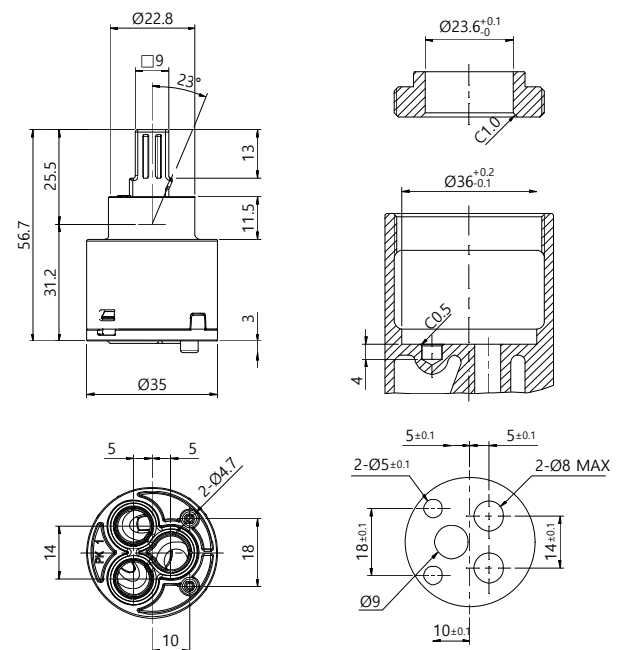
35mm Ceramic Cartridge



Max. Opening Angle	23°	
Max. Turning Angle	90°	
Nut Torque	10 ~ 11 Nm	
Water Resistance Pressure	Max. 35bar	
Working Torque	Max. 0.5 Nm	
Max. Temperature	90°C	
Flow Rate	(at 1bar)	8~14 l/min
	(at 2bar)	11~18 l/min
	(at 3bar)	15~25 l/min
Endurance Test (EN-817)	500,000 times	

Dimensions (mm)

- change of lever usage angle



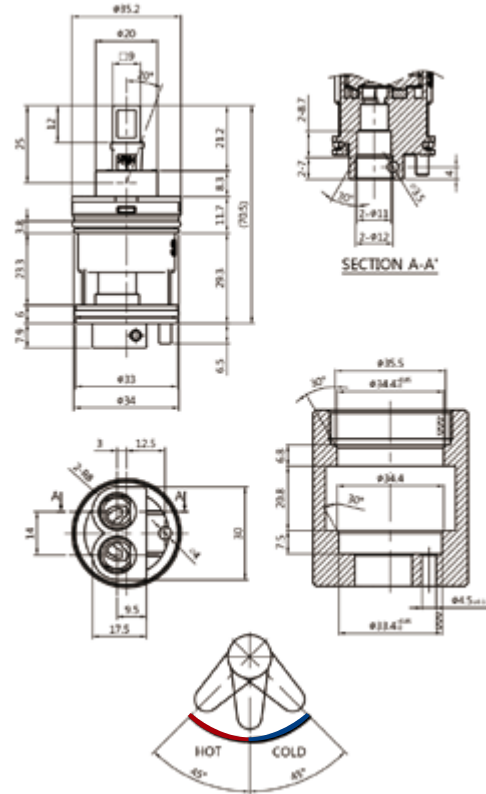
S.C.C CARTRIDGE

SCC 35AF-H 35mm Ceramic Cartridge



Max. Opening Angle	20°	
Max. Turning Angle	90°	
Nut Torque	10 ~ 11 Nm	
Water Resistance Pressure	Max. 35bar	
Working Torque	Max. 0.5 Nm	
Max. Temperature	90°C	
Flow Rate	(at 1bar)	7.5~8.5 ℓ/min
	(at 2bar)	11.0~12.0 ℓ/min
	(at 3bar)	14.0~15.0 ℓ/min
Endurance Test (EN-817)	500,000 times	

Dimensions (mm)

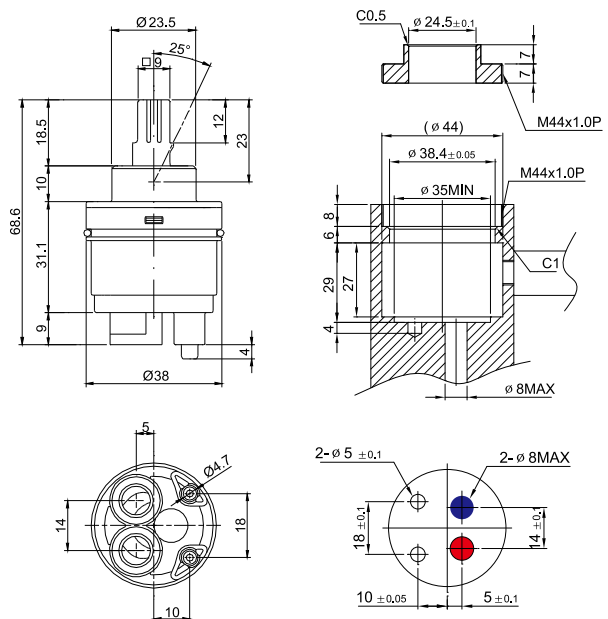


SCC 38AF,A 38mm Ceramic Cartridge



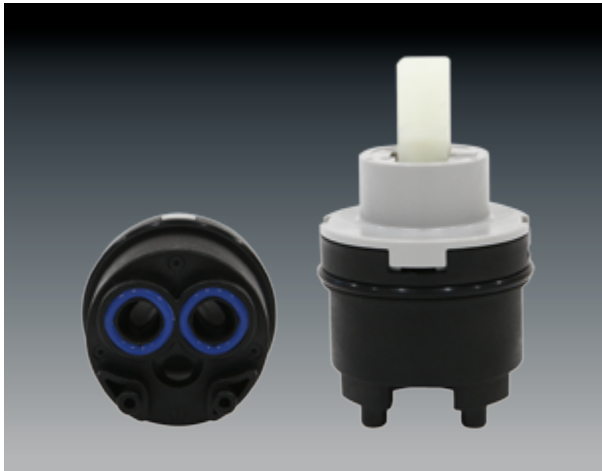
Max. Opening Angle	25°	
Max. Turning Angle	100°	
Nut Torque	10 ~ 11 Nm	
Water Resistance Pressure	Max. 35bar	
Working Torque	Max. 0.5 Nm	
Max. Temperature	90°C	
Max. Noise Level	15 ~ 18db	
Flow Rate	(at 1bar)	12~13 ℓ/min
	(at 2bar)	17~19 ℓ/min
	(at 3bar)	20~28 ℓ/min
Endurance Test	500,000 times	

Dimensions (mm)

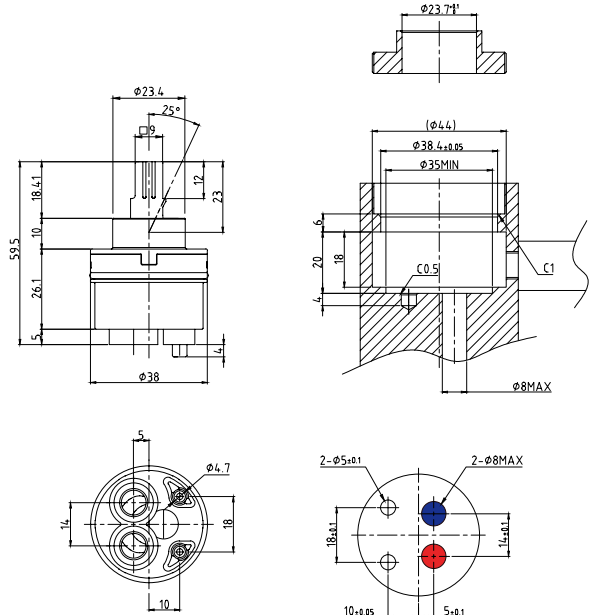


SCC 38AF, A-CO

38mm Ceramic Cartridge



Dimensions (mm)



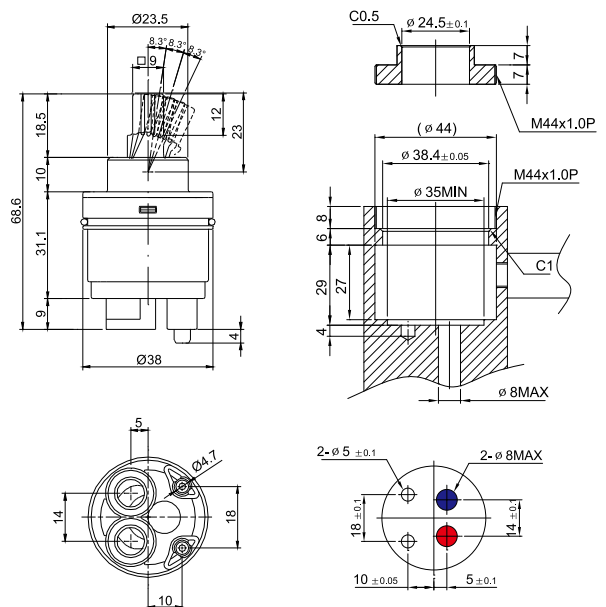
Max. Opening Angle		25°
Max. Turning Angle		100°
Nut Torque		10 ~ 11 Nm
Water Resistance Pressure		Max. 35bar
Working Torque		Max. 0.5 Nm
Max. Temperature		90°C
Max. Noise Level		15 ~ 18db
Flow Rate	(at 1bar)	12~13 ℓ/min
	(at 2bar)	17~19 ℓ/min
	(at 3bar)	20~28 ℓ/min
Endurance Test		500,000 times

SCC 38AF, A-3S

38mm Ceramic Cartridge (3step)



Dimensions (mm)



Max. Opening Angle		25°
Max. Turning Angle		100°
Nut Torque		10 ~ 11 Nm
Water Resistance Pressure		Max. 35bar
Working Torque		Max. 0.5 Nm
Max. Temperature		90°C
Max. Noise Level		15 ~ 18db
Flow Rate	(at 1bar)	12~13 ℓ/min
	(at 2bar)	17~19 ℓ/min
	(at 3bar)	20~28 ℓ/min
Endurance Test		500,000 times

S.C.C CARTRIDGE

SCC 38MF

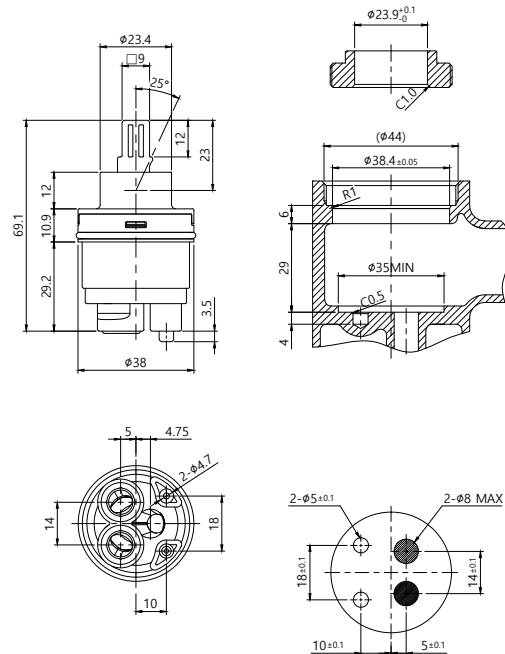
38mm Ceramic Cartridge



Max. Opening Angle	25°	
Max. Turning Angle	90°	
Nut Torque	10 ~ 11 Nm	
Water Resistance Pressure	Max. 35bar	
Working Torque	Max. 0.5 Nm	
Max. Temperature	90°C	
Flow Rate	(at 1bar)	12~13 l/min
	(at 2bar)	17~19 l/min
	(at 3bar)	20~28 l/min
Endurance Test	500,000 times	

Dimensions (mm)

- 35MF-25/3S 2step.3step function



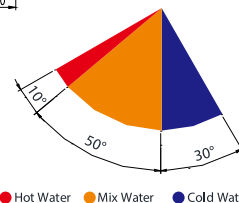
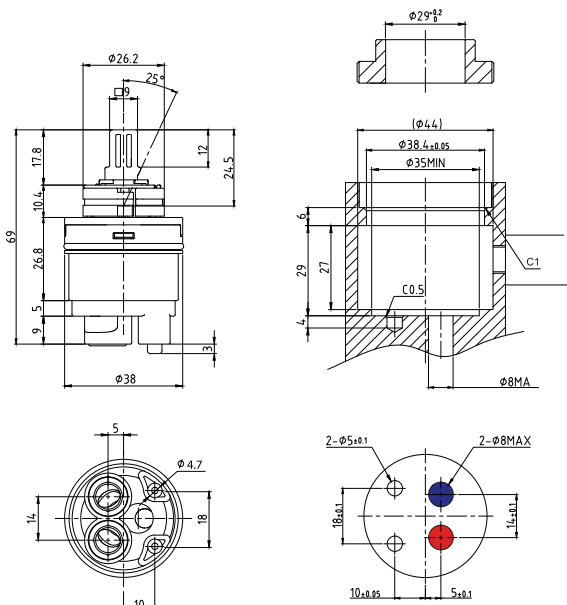
SCC 38EF

38mm Eco Ceramic Cartridge



Max. Opening Angle	25°	
Max. Turning Angle	60°/30°	
Nut Torque	10 ~ 11 Nm	
Water Resistance Pressure	Max. 35bar	
Working Torque	Max. 0.5 Nm	
Max. Temperature	90°C	
Max. Noise Level	15 ~ 18db	
Flow Rate	(at 1bar)	7.5~8.5 l/min
	(at 2bar)	10.5~12 l/min
	(at 3bar)	13.5~15 l/min
Endurance Test	500,000 times	

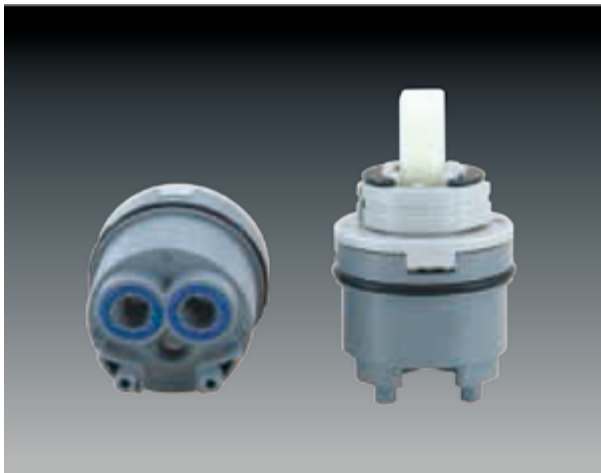
Dimensions (mm)



● Hot Water ● Mix Water ● Cold Water

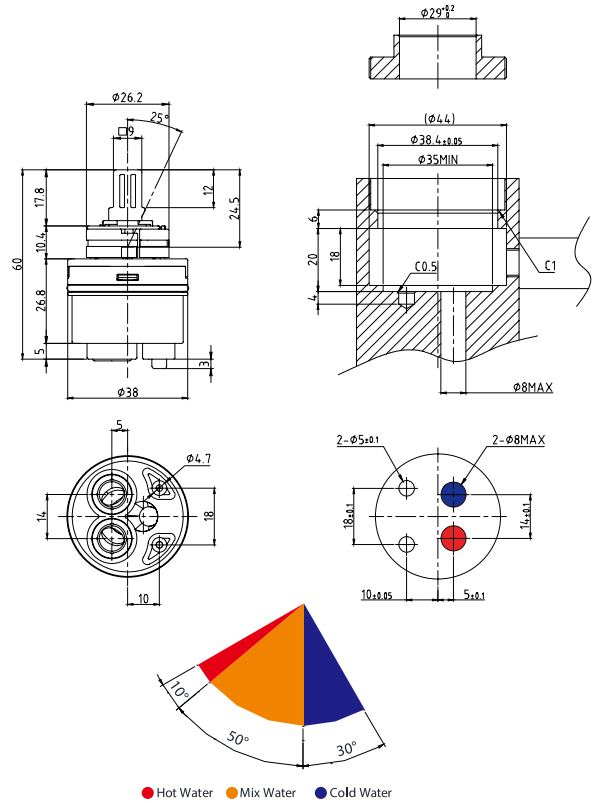
SCC 38EF-CO

38mm Ceramic Cartridge (3step)



Max. Opening Angle	25°	
Max. Turning Angle	60°/30°	
Nut Torque	10 ~ 11 Nm	
Water Resistance Pressure	Max. 35bar	
Working Torque	Max. 0.5 Nm	
Max. Temperature	90°C	
Max. Noise Level	15 ~ 18db	
Flow Rate	(at 1bar)	7.5~8.5 l/min
	(at 2bar)	10.5~12 l/min
	(at 3bar)	13.5~15 l/min
Endurance Test	500,000 times	

Dimensions (mm)



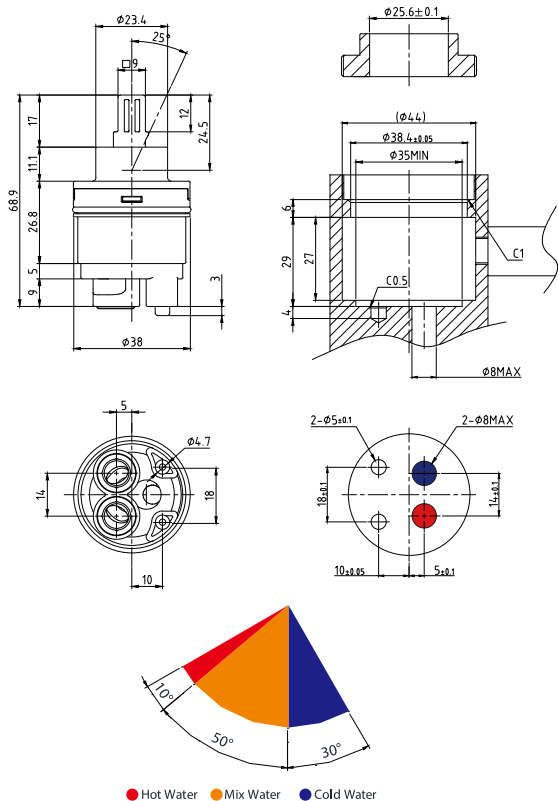
SCC 38EF,A

40mm Ceramic Cartridge (3step)



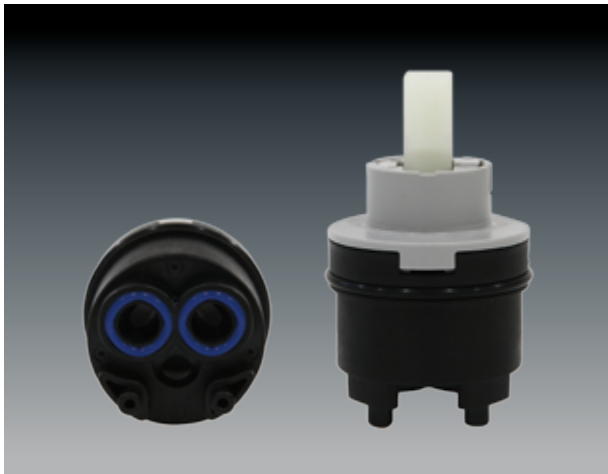
Max. Opening Angle	25°	
Max. Turning Angle	60°/30°	
Nut Torque	10 ~ 11 Nm	
Water Resistance Pressure	Max. 35bar	
Working Torque	Max. 0.5 Nm	
Max. Temperature	90°C	
Max. Noise Level	15 ~ 18db	
Flow Rate	(at 1bar)	7.5~8.5 l/min
	(at 2bar)	10.5~12 l/min
	(at 3bar)	13.5~15 l/min
Endurance Test	500,000 times	

Dimensions (mm)

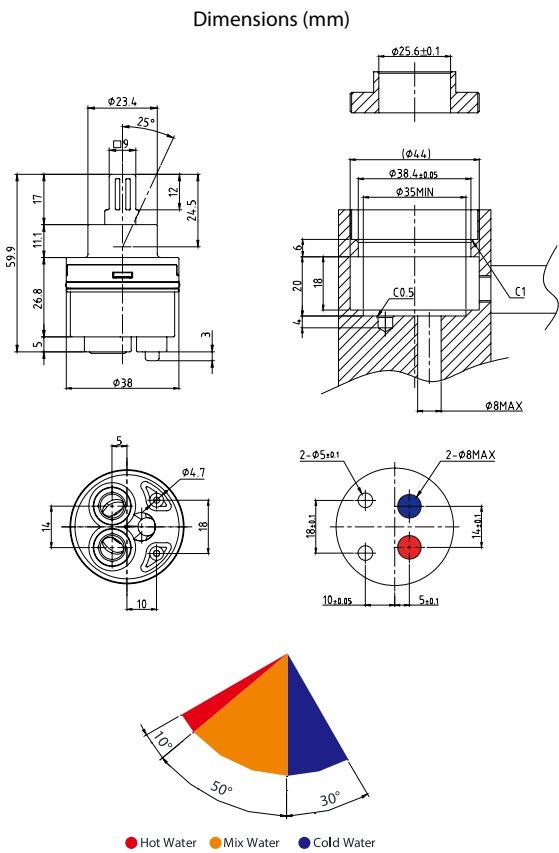


S.C.C CARTRIDGE

SCC 38EF,A-CO 38mm Eco Ceramic Cartridge



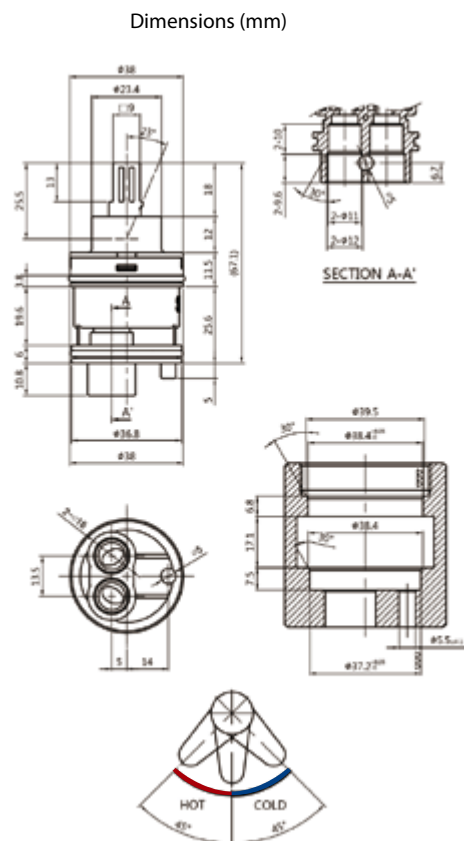
Max. Opening Angle	25°	
Max. Turning Angle	60°/30°	
Nut Torque	10 ~ 11 Nm	
Water Resistance Pressure	Max. 35bar	
Working Torque	Max. 0.5 Nm	
Max. Temperature	90°C	
Max. Noise Level	15 ~ 18db	
Flow Rate	(at 1bar)	7.5~8.5 l/min
	(at 2bar)	10.5~12 l/min
	(at 3bar)	13.5~15 l/min
Endurance Test	500,000 times	



SCC 38AF-H 40mm Ceramic Cartridge



Max. Opening Angle	23°	
Max. Turning Angle	90°	
Nut Torque	10 ~ 11 Nm	
Water Resistance Pressure	Max. 35bar	
Working Torque	Max. 0.5 Nm	
Max. Temperature	90°C	
Flow Rate	(at 1bar)	8.0~9.0 l/min
	(at 2bar)	13.0~14.0 l/min
	(at 3bar)	17.0~18.0 l/min
Endurance Test (EN-817)	500,000 times	



SCC 40SMJR

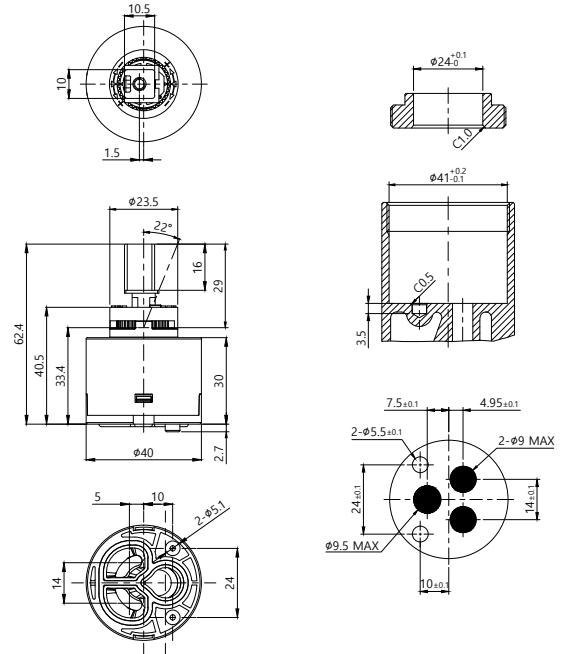
40mm Ceramic Cartridge



Dimensions (mm)

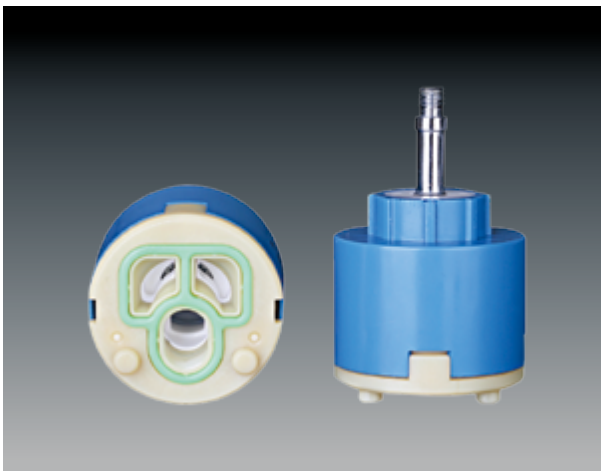
- low water noise, high flow rate
- high temperature limit

Max. Opening Angle	22°	
Max. Turning Angle	90°	
Nut Torque	8 ~ 10 Nm	
Water Resistance Pressure	Max. 25bar	
Working Torque	Max. 0.5 Nm	
Max. Temperature	90°C	
Flow Rate	(at 1bar)	15~19 l/min
	(at 2bar)	22~27 l/min
	(at 3bar)	27~34 l/min
Endurance Test (EN-817)	500,000 times	



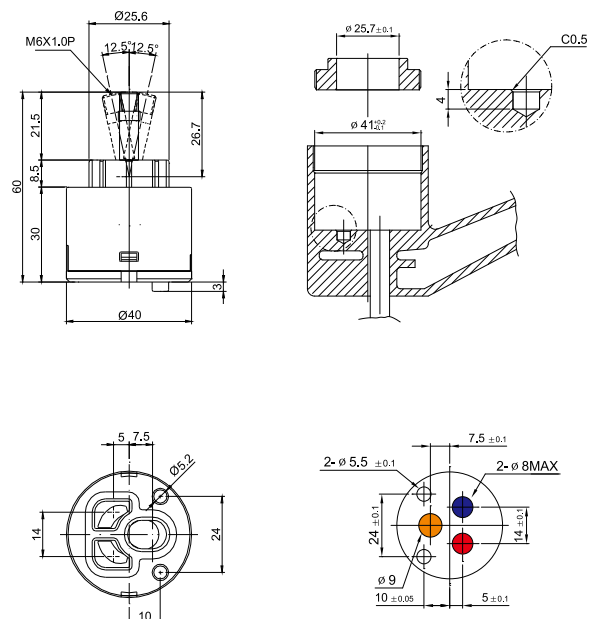
SCC 40JR

40mm Ceramic Cartridge (joystick)



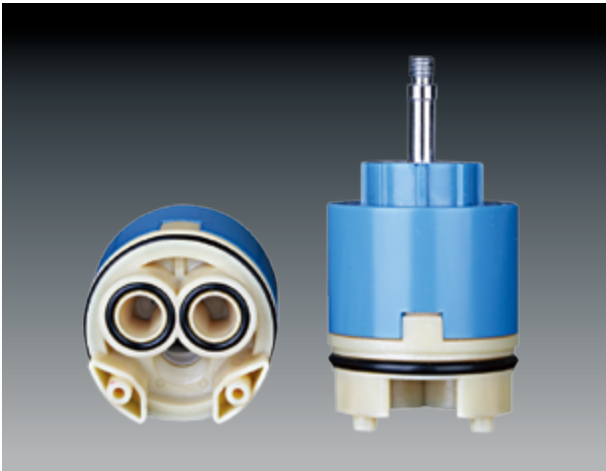
Dimensions (mm)

Max. Opening Angle	25°	
Max. Turning Angle	100°	
Nut Torque	10 ~ 11 Nm	
Water Resistance Pressure	Max. 35bar	
Working Torque	Max. 0.5 Nm	
Max. Temperature	90°C	
Max. Noise Level	15 ~ 18db	
Flow Rate	(at 1bar)	12~13 l/min
	(at 2bar)	17~19 l/min
	(at 3bar)	20~28 l/min
Endurance Test	500,000 times	



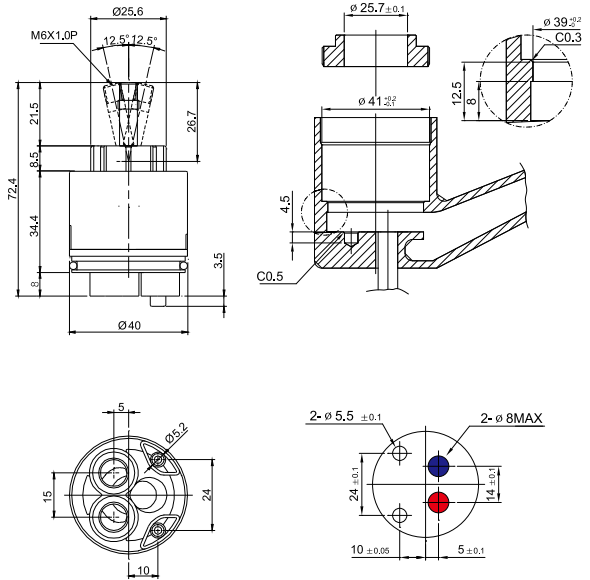
S.C.C CARTRIDGE

SCC 40JF 40mm Ceramic Cartridge(joystick)

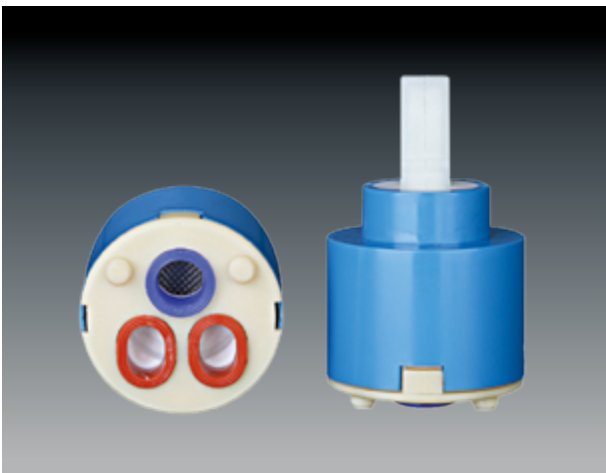


Max. Opening Angle	25°	
Max. Turning Angle	100°	
Nut Torque	10 ~ 11 Nm	
Water Resistance Pressure	Max. 35bar	
Working Torque	Max. 0.5 Nm	
Max. Temperature	90°C	
Max. Noise Level	15 ~ 18db	
Flow Rate	(at 1bar)	12~13 l/min
	(at 2bar)	17~19 l/min
	(at 3bar)	20~28 l/min
Endurance Test	500,000 times	

Dimensions (mm)

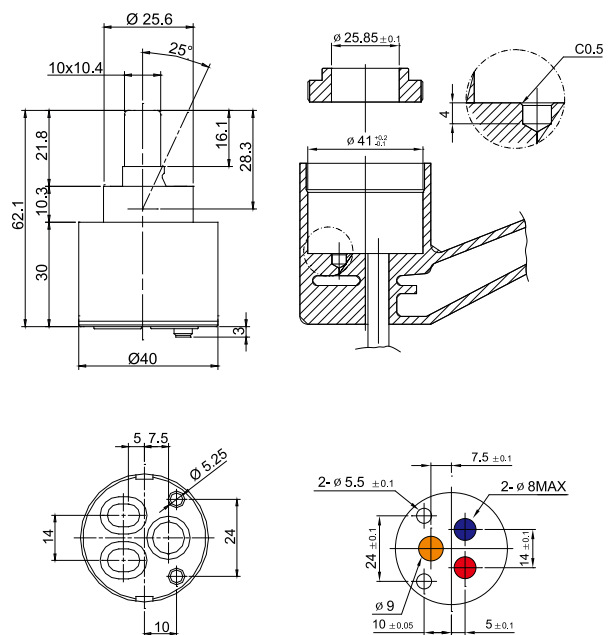


SCC 40AR 40mm Ceramic Cartridge



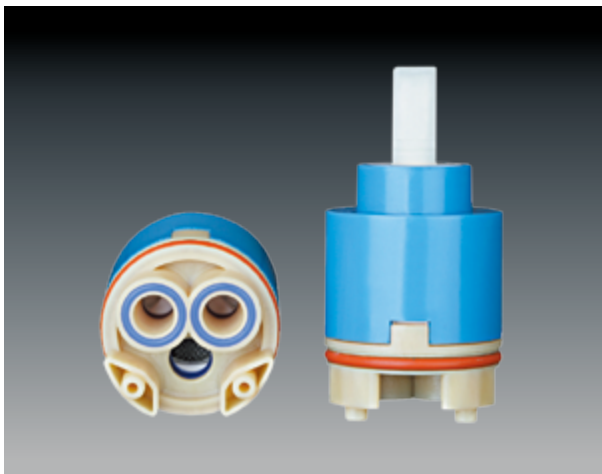
Max. Opening Angle	25°	
Max. Turning Angle	110°	
Nut Torque	10 ~ 11 Nm	
Water Resistance Pressure	Max. 35bar	
Working Torque	Max. 0.5 Nm	
Max. Temperature	90°C	
Max. Noise Level	15 ~ 18db	
Flow Rate	(at 1bar)	12~13 l/min
	(at 2bar)	17~19 l/min
	(at 3bar)	20~28 l/min
Endurance Test	500,000 times	

Dimensions (in mm)

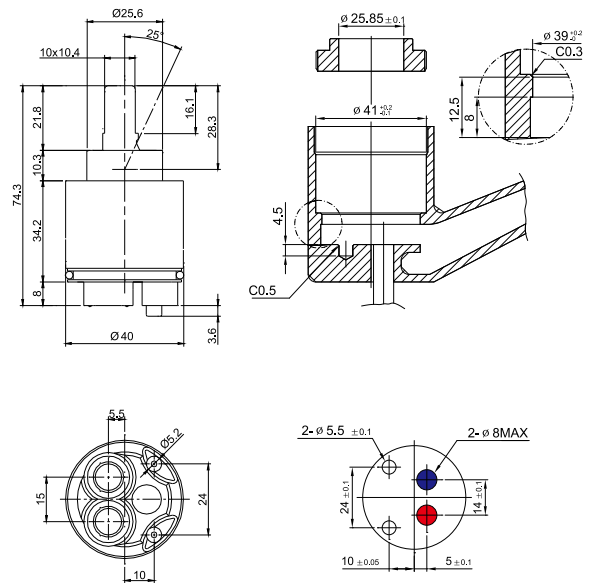


SCC 40AF

40mm Ceramic Cartridge



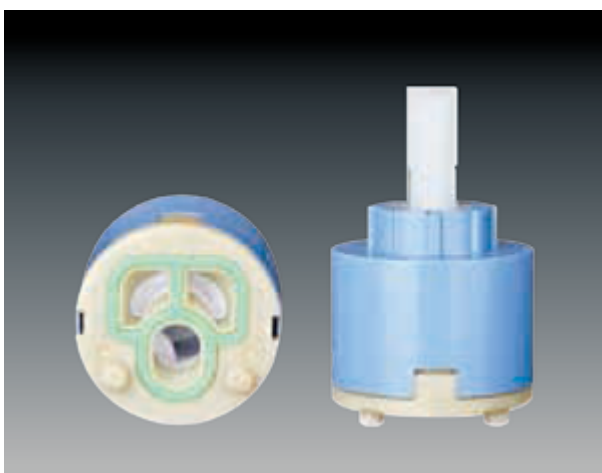
Dimensions (in mm)



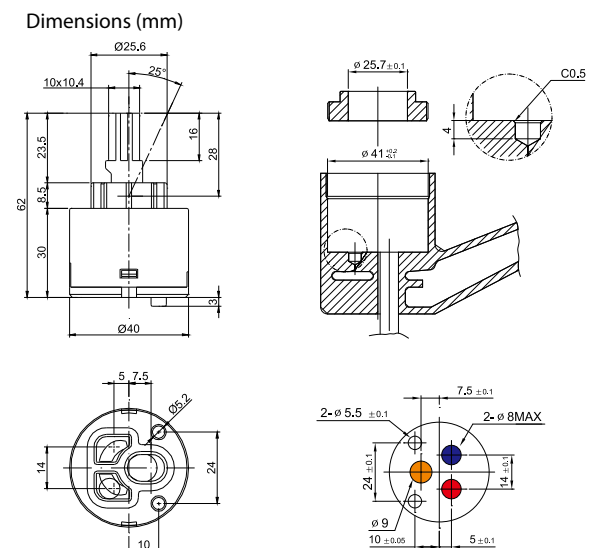
Max. Opening Angle	25°	
Max. Turning Angle	110°	
Nut Torque	10 ~ 11 Nm	
Water Resistance Pressure	Max. 35bar	
Working Torque	Max. 0.5 Nm	
Max. Temperature	90°C	
Max. Noise Level	15 ~ 18db	
Flow Rate	(at 1bar)	12~13 ℓ/min
	(at 2bar)	17~19 ℓ/min
	(at 3bar)	20~28 ℓ/min
Endurance Test	500,000 times	

SCC 40ER

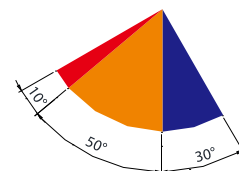
40mm Eco Ceramic Cartridge



Dimensions (mm)



Max. Opening Angle	25°	
Max. Turning Angle	60°/30°	
Nut Torque	10 ~ 11 Nm	
Water Resistance Pressure	Max. 35bar	
Working Torque	Max. 0.5 Nm	
Max. Temperature	90°C	
Max. Noise Level	15 ~ 18db	
Flow Rate	(at 1bar)	9~10 ℓ/min
	(at 2bar)	11~13 ℓ/min
	(at 3bar)	14~16 ℓ/min
Endurance Test	500,000 times	

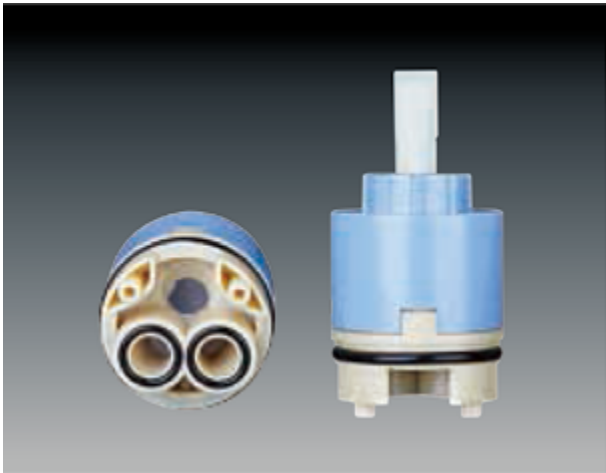


● Hot Water ● Mix Water ● Cold Water

S.C.C CATRIDGE

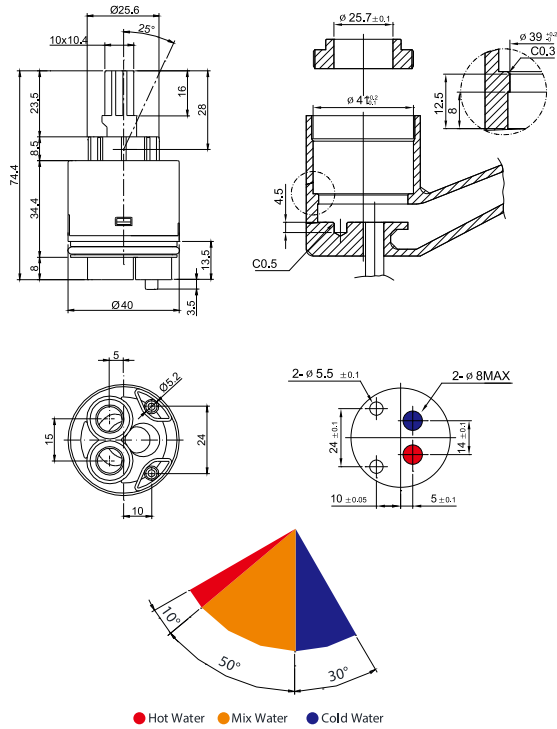
SCC 40EF

40mm Eco Ceramic Cartridge



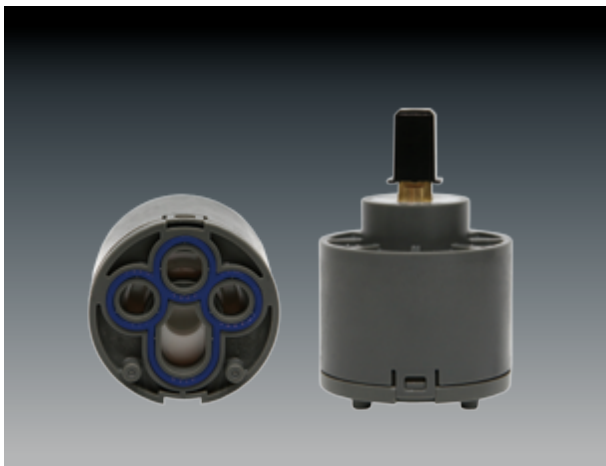
Max. Opening Angle	25°	
Max. Turning Angle	60°/30°	
Nut Torque	10 ~ 11 Nm	
Water Resistance Pressure	Max. 35bar	
Working Torque	Max. 0.5 Nm	
Max. Temperature	90°C	
Max. Noise Level	15 ~ 18db	
Flow Rate	(at 1bar)	9~10 ℓ/min
	(at 2bar)	11~13 ℓ/min
	(at 3bar)	14~16 ℓ/min
Endurance Test	500,000 times	

Dimensions (in mm)



SCC 47JR

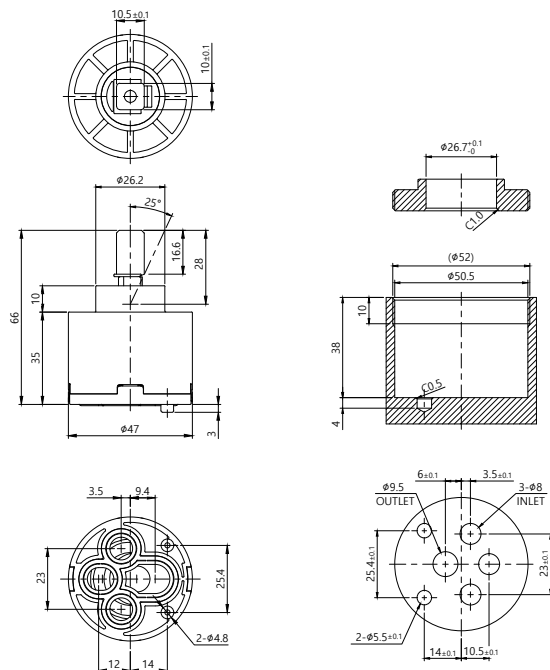
47mm Ceramic Cartridge



Max. Opening Angle	25°	
Max. Turning Angle	150°	
Nut Torque	10 ~ 12 Nm	
Water Resistance Pressure	Max. 20bar	
Working Torque	Max. 0.5 Nm	
Max. Temperature	90°C	
Flow Rate	(at 1bar)	17~20 ℓ/min
	(at 2bar)	23~27 ℓ/min
	(at 3bar)	28~33 ℓ/min
Endurance Test	500,000 tiems	

Dimensions (mm)

- 3-in let 1 out let





DIVERTER CATRIDGE

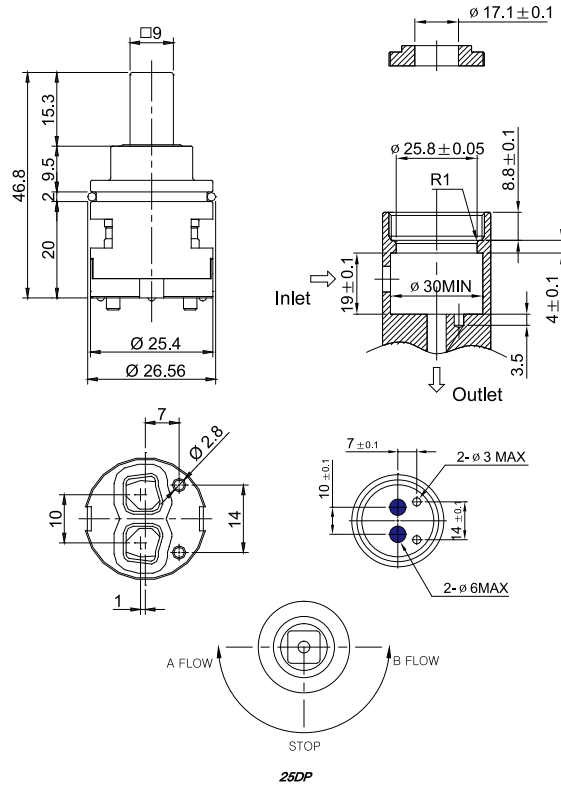
S.C.C DIVERTER CATRIDGE

SCC 25DP 25mm Diverter



Max. Turning Angle	180°	
Nut Torque	10~ 11 Nm	
Water Resistance Pressure	Max. 35bar	
Working Torque	Max. 0.5 Nm	
Max. Temperature	90°C	
Max. Noise Level	15 ~ 18db	
Flow Rate	(at 1bar)	12~14 l/min
	(at 2bar)	18~21 l/min
	(at 3bar)	23~25 l/min
Endurance Test	500,000 times	

Dimensions (mm)

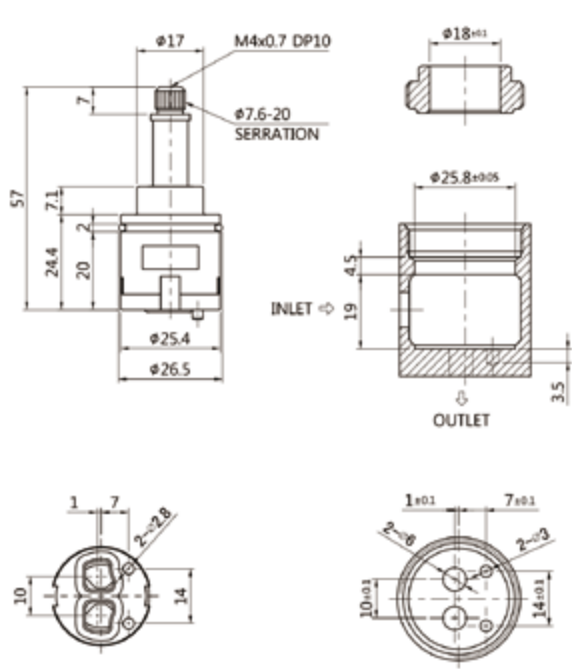


SCC 25DD-1 25mm Diverter



Max. Turning Angle	180°	
Nut Torque	8~ 9 Nm	
Water Resistance Pressure	Max. 25bar	
Working Torque	Max. 0.5 Nm	
Max. Temperature	90°C	
Max. Noise Level	15 ~ 18db	
Flow Rate	(at 1bar)	12~14 l/min
	(at 2bar)	18~21 l/min
	(at 3bar)	23~25 l/min
Endurance Test	500,000 times	

Dimensions (mm)

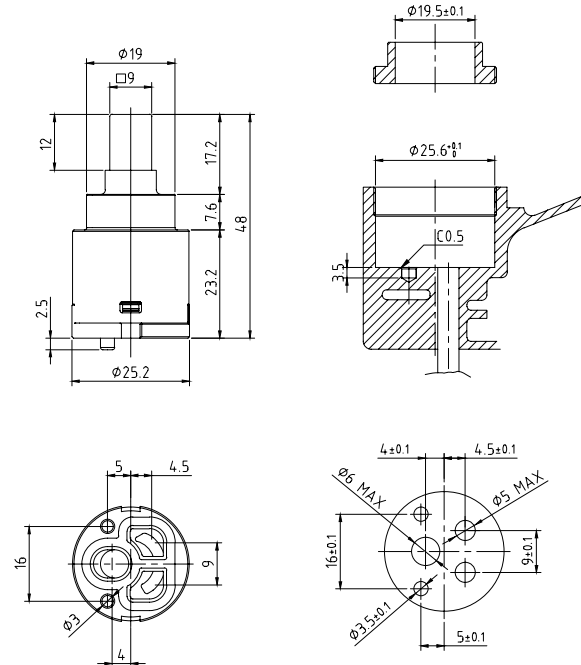


SCC 25D-2W

25mm Diverter



Dimensions (in mm)



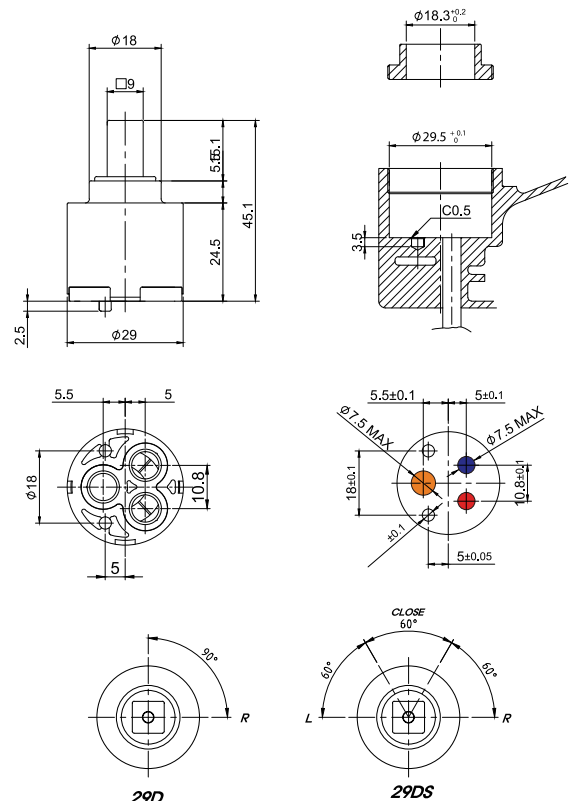
Max. Turning Angle		100°
Nut Torque		8 ~ 9 Nm
Water Resistance Pressure		Max. 25bar
Working Torque		Max. 0.5 Nm
Max. Temperature		90°C
Max. Noise Level		15 ~ 18db
Flow Rate	(at 1bar)	6.8~7.5 ℓ/min
	(at 2bar)	8.8~9.4 ℓ/min
	(at 3bar)	10.5~11.0 ℓ/min
Endurance Test		500,000 times

SCC 29D/DS

29mm Diverter



Dimensions (in mm)



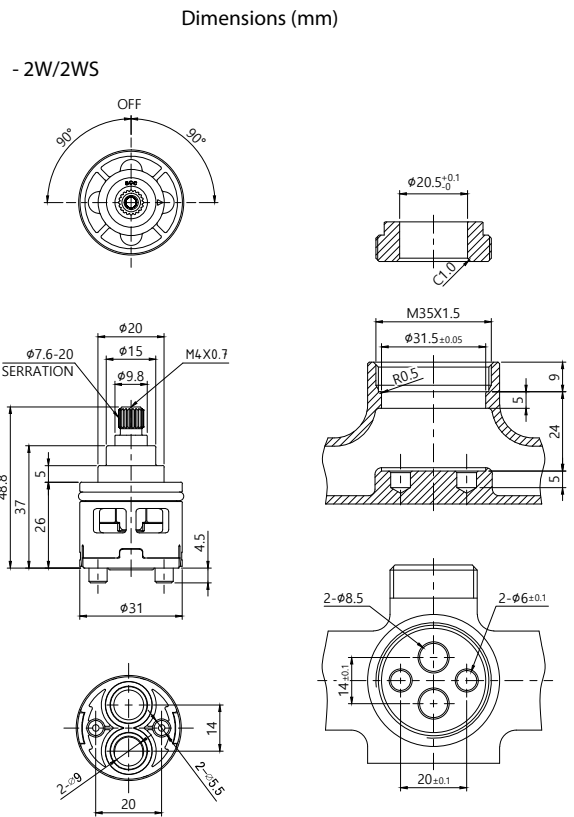
Max. Turning Angle		29D 90° / 29DS 180°
Nut Torque		9 ~ 10 Nm
Water Resistance Pressure		Max. 25bar
Working Torque		Max. 0.5 Nm
Max. Temperature		90°C
Max. Noise Level		15 ~ 18db
Flow Rate	(at 1bar)	13.0~14.0 ℓ/min
	(at 2bar)	21.0~22.0 ℓ/min
	(at 3bar)	26.0~27.0 ℓ/min
Endurance Test		500,000 times

S.C.C DIVERTER CARTRIDGE

SCC D31 31mm Diverter



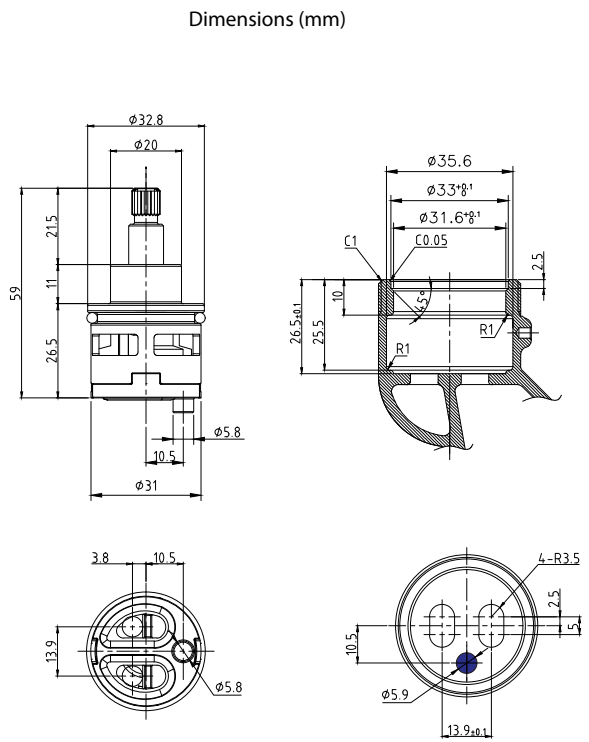
Max. Turning Angle	180°	
Nut Torque	7 ~ 8 Nm	
Water Resistance Pressure	Max. 25bar	
Working Torque	Max. 0.5 Nm	
Max. Temperature	90°C	
Flow Rate	(at 1bar)	23~25 l/min
	(at 2bar)	33~35 l/min
	(at 3bar)	40~32 l/min
Endurance Test	500,000 times	



SCC 31D-2W 31mm Diverter



Max. Turning Angle	360°	
Nut Torque	10 ~ 11 Nm	
Water Resistance Pressure	Max. 35bar	
Working Torque	Max. 0.5 Nm	
Max. Temperature	80°C	
Max. Noise Level	15 ~ 18db	
Flow Rate	(at 1bar)	19~21 l/min
	(at 2bar)	24~26 l/min
	(at 3bar)	30~32 l/min
Endurance Test	500,000 times	



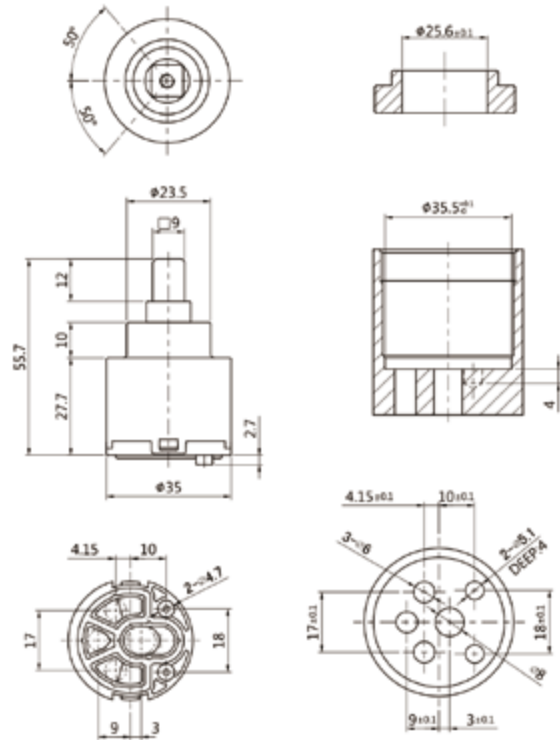
SCC 35D-3W

35mm Diverter



Max. Turning Angle	100°	
Nut Torque	10 ~ 11 Nm	
Water Resistance Pressure	Max. 35bar	
Working Torque	Max. 0.5 Nm	
Max. Temperature	90°C	
Max. Noise Level	15 ~ 18db	
Flow Rate	(at 1bar)	10~11 ℓ/min
	(at 2bar)	18~19 ℓ/min
	(at 3bar)	20~21 ℓ/min
Endurance Test	500,000 times	

Dimensions (mm)



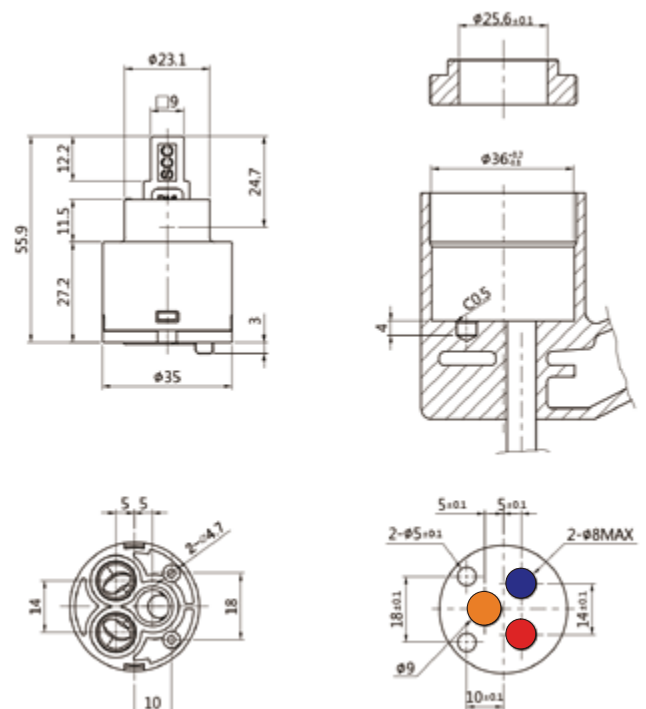
SCC 35GD-2W

35mm Diverter



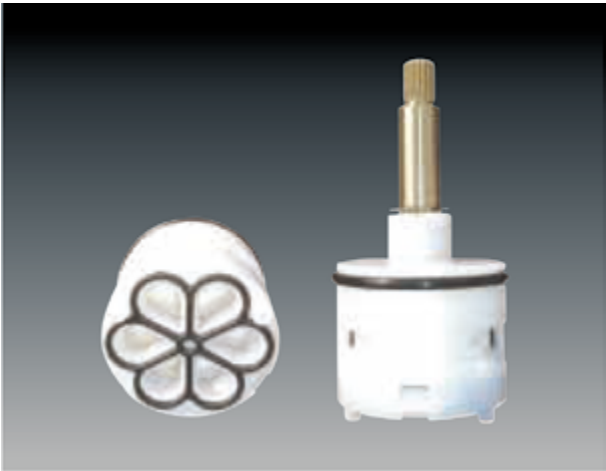
Max. Turning Angle	90°	
Nut Torque	10 ~ 11 Nm	
Water Resistance Pressure	Max. 35bar	
Working Torque	Max. 0.5 Nm	
Max. Temperature	90°C	
Max. Noise Level	15 ~ 18db	
Flow Rate	(at 1bar)	12~13 ℓ/min
	(at 2bar)	17~19 ℓ/min
	(at 3bar)	20~28 ℓ/min
Endurance Test	500,000 times	

Dimensions (mm)



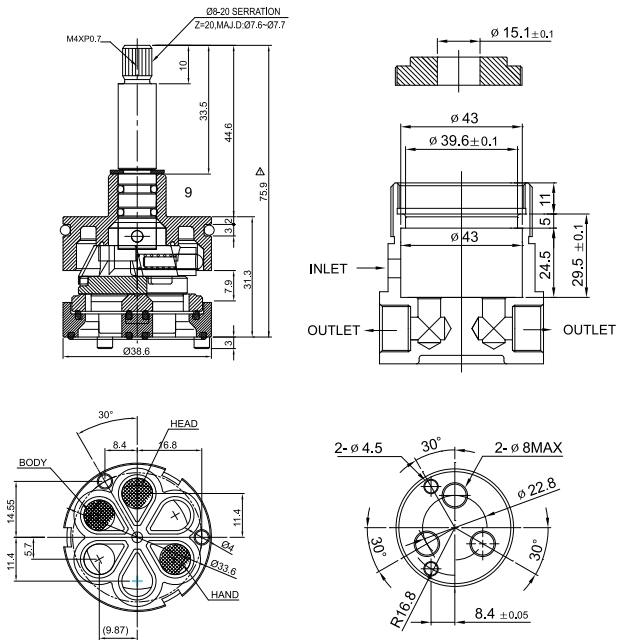
S.C.C DIVERTER CATRIDGE

SCC 40D-4W(3W,5W) 40mm Diverter



Max. Turning Angle	360°	
Nut Torque	8 ~ 10 Nm	
Water Resistance Pressure	Max. 35bar	
Working Torque	Max. 0.5 Nm	
Max. Temperature	90°C	
Max. Noise Level	15 ~ 18db	
Flow Rate	(at 1bar)	10~11 ℓ/min
	(at 2bar)	15~17 ℓ/min
	(at 3bar)	18~20 ℓ/min
Endurance Test	500,000 times	

Dimensions (mm)



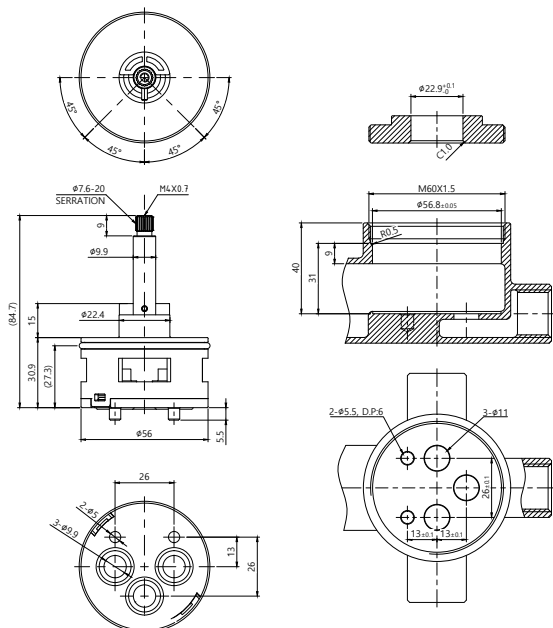
SCC D56 56mm Diverter



Max. Turning Angle	180°	
Nut Torque	10 ~ 11 Nm	
Water Resistance Pressure	Max. 25bar	
Working Torque	Max. 0.5 Nm	
Max. Temperature	70°C	
Flow Rate	(at 1bar)	28~30 ℓ/min
	(at 2bar)	37~39 ℓ/min
	(at 3bar)	48~50 ℓ/min
Endurance Test	500,000 times	

Dimensions (mm)

- 5 out let ,6 out let
- working angle 180/360





HEADWORK CARTRIDGE

BRASS HEADWORK CARTRIDGE

LINEAR HEADWORK CARTRIDGE

PLASTIC HEADWORK CARTRIDGE

S.C.C HEADWORK CARTRIDGE

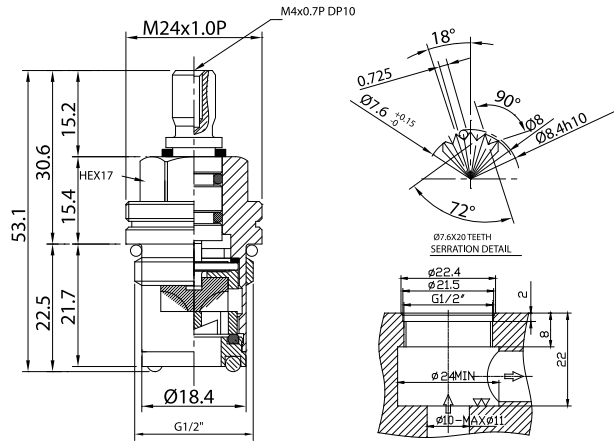
SCC S1015-RO

1/2" Ceramic Headwork



Max. Opening Angle	90°	
Nut Torque	10 ~ 11 Nm	
Water Resistance Pressure	Max. 50bar	
Working Torque	Max. 0.5 Nm	
Max. Temperature	90°C	
Max. Noise Level	15 ~ 18db	
Flow Rate	(at 1bar)	15~18 l/min
	(at 2bar)	23~25 l/min
	(at 3bar)	28~32 l/min
Endurance Test	500,000 times	

Dimensions (in mm)



1. A-TYPE LEFT → RIGHT : CLOSE ☉
RED O-RING
2. B-TYPE RIGHT → LEFT : CLOSE ☉
BLUE O-RING
V-cutting for Housing

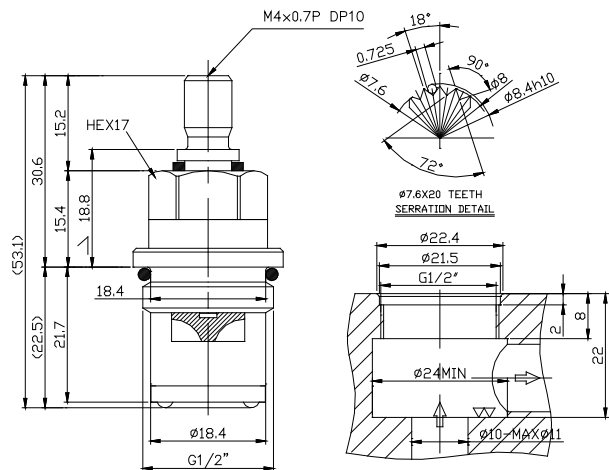
SCC S1015-SO

1/2" Ceramic Headwork



Max. Opening Angle	90°	
Nut Torque	10 ~ 11 Nm	
Water Resistance Pressure	Max. 50bar	
Working Torque	Max. 0.5 Nm	
Max. Temperature	90°C	
Max. Noise Level	15 ~ 18db	
Flow Rate	(at 1bar)	15~18 l/min
	(at 2bar)	23~25 l/min
	(at 3bar)	28~32 l/min
Endurance Test	500,000 times	

Dimensions (in mm)



1. A-TYPE LEFT → RIGHT : CLOSE ☉
RED O-RING
2. B-TYPE RIGHT → LEFT : CLOSE ☉
BLUE O-RING
V-cutting for Housing

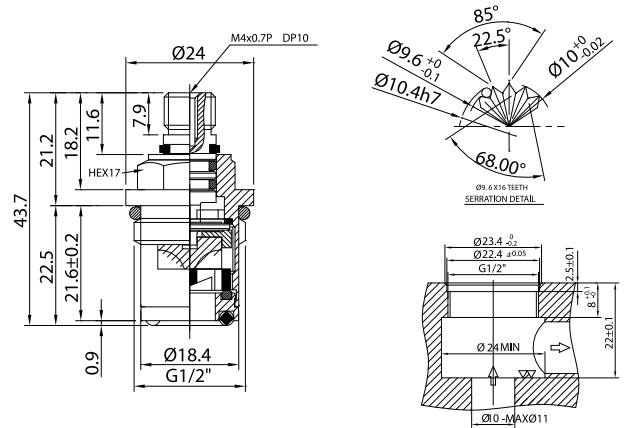
SCC S1030-KO

1/2" Ceramic Headwork



Max. Opening Angle	90°	
Nut Torque	10 ~ 11 Nm	
Water Resistance Pressure	Max. 50bar	
Working Torque	Max. 0.5 Nm	
Max. Temperature	90°C	
Max. Noise Level	15 ~ 18db	
Flow Rate	(at 1bar)	15~18 l/min
	(at 2bar)	23~25 l/min
	(at 3bar)	28~32 l/min
Endurance Test	500,000 times	

Dimensions (mm)



1. A-TYPE LEFT – RIGHT : CLOSE ☺
RED O-RING
2. B-TYPE RIGHT – LEFT : CLOSE ☺
BLUE O-RING
V-cutting for Housing

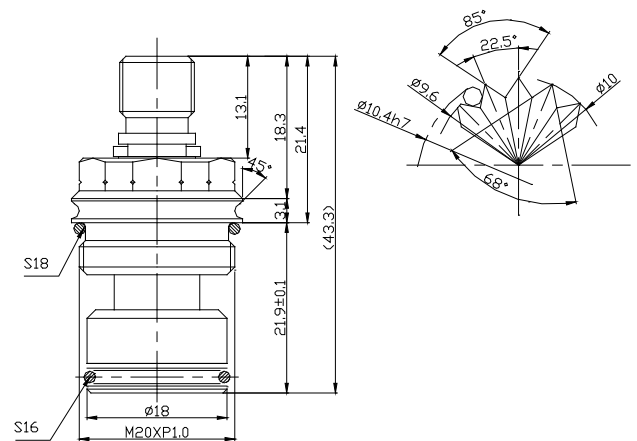
SCC S1062-NO

M20 Ceramic Headwork



Max. Opening Angle	90°	
Nut Torque	10 ~ 11 Nm	
Water Resistance Pressure	Max. 50bar	
Working Torque	Max. 0.5 Nm	
Max. Temperature	90°C	
Max. Noise Level	15 ~ 18db	
Flow Rate	(at 1bar)	9~10 l/min
	(at 2bar)	13~14 l/min
	(at 3bar)	17~18 l/min
Endurance Test	500,000 times	

Dimensions (mm)



1. A-TYPE LEFT – RIGHT : CLOSE ☺
RED O-RING
2. B-TYPE RIGHT – LEFT : CLOSE ☺
BLUE O-RING
V-cutting for Housing

S.C.C HEADWORK CARTRIDGE

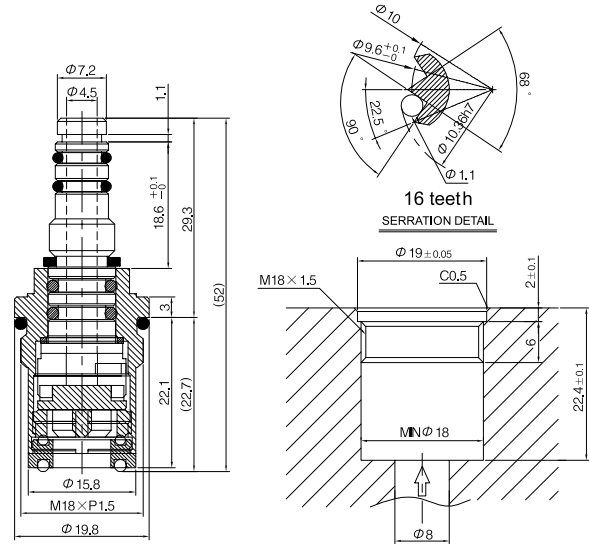
SCC S1062-TO

Linear Water Flow Headwork



Max. Opening Angle	90°	
Nut Torque	10 ~ 11 Nm	
Water Resistance Pressure	Max. 50bar	
Working Torque (Operation distance 100mm standard)	Max. 0.5 Nm	
Max. Temperature	90°C	
Max. Noise Level	15 ~ 18db	
Flow Rate	(at 1bar)	9~10 l/min
	(at 2bar)	13~14 l/min
	(at 3bar)	17~18 l/min
Endurance Test	500,000 times	

Dimensions (mm)



1. A-TYPE LEFT → RIGHT : CLOSE (⊙)
RED O-RING
2. B-TYPE RIGHT → LEFT : CLOSE (⊙)
BLUE O-RING
V-cutting for Housing

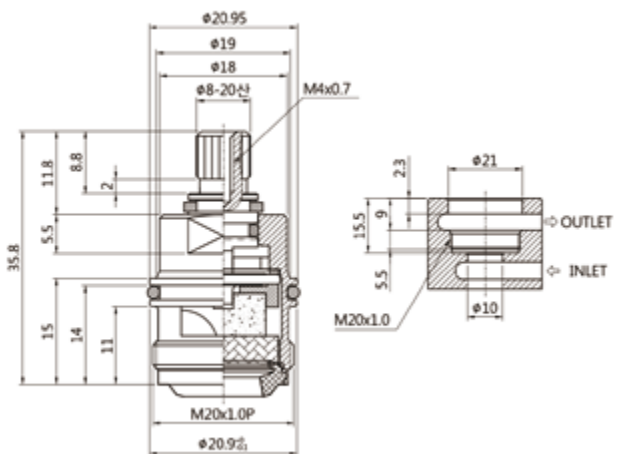
SCC M20

Linear Ceramic Headwork



Max. Opening Angle	90°	
Nut Torque	10 ~ 11 Nm	
Water Resistance Pressure	Max. 50bar	
Working Torque (Operation distance 100mm standard)	Max. 0.5 Nm	
Max. Temperature	90°C	
Max. Noise Level	15 ~ 18db	
Flow Rate	(at 1bar)	23~25 l/min
	(at 2bar)	31~33 l/min
	(at 3bar)	40~48 l/min
Endurance Test	500,000 times	

Dimensions (mm)



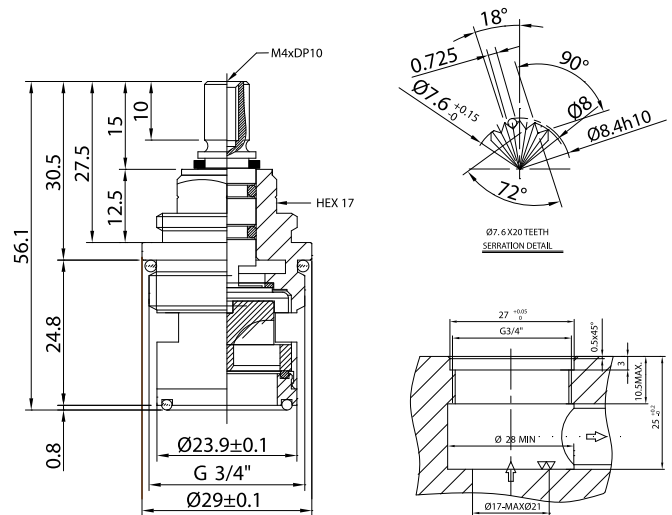
SCC S1091-SO

3/4" Ceramic Headwork



Max. Opening Angle	90°	
Nut Torque	10 ~ 11 Nm	
Water Resistance Pressure	Max. 50bar	
Working Torque	Max. 0.5 Nm	
Max. Temperature	90°C	
Max. Noise Level	15 ~ 18db	
Flow Rate	(at 1bar)	23~25 l/min
	(at 2bar)	31~33 l/min
	(at 3bar)	40~48 l/min
Endurance Test	500,000 times	

Dimensions (mm)



1. A-TYPE LEFT → RIGHT : CLOSE ☉
RED O-RING
2. B-TYPE RIGHT → LEFT : CLOSE ☉
BLUE O-RING
V-cutting for Housing

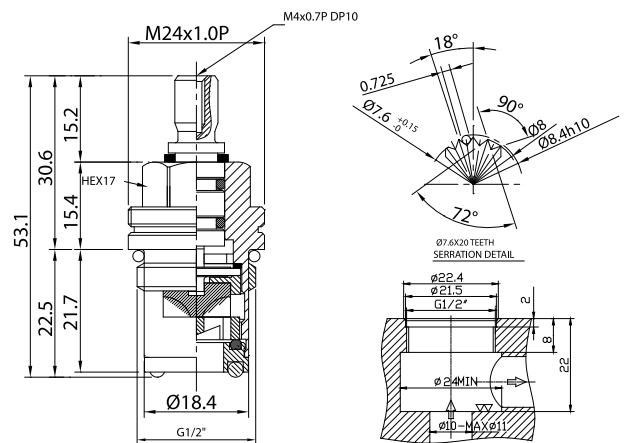
SCC S1015-PO

1/2" Plastic Ceramic Headwork



Max. Opening Angle	90°	
Nut Torque	9 ~ 10 Nm	
Water Resistance Pressure	Max. 50bar	
Working Torque	Max. 0.5 Nm	
Max. Temperature	90°C	
Max. Noise Level	15 ~ 18db	
Flow Rate	(at 1bar)	15~18 l/min
	(at 2bar)	23~25 l/min
	(at 3bar)	28~32 l/min
Endurance Test	500,000 times	

Dimensions (mm)



1. A-TYPE LEFT → RIGHT : CLOSE ☉
2. B-TYPE RIGHT → LEFT : CLOSE ☉
V-cutting for Sindle

S.C.C HEADWORK CARTRIDGE

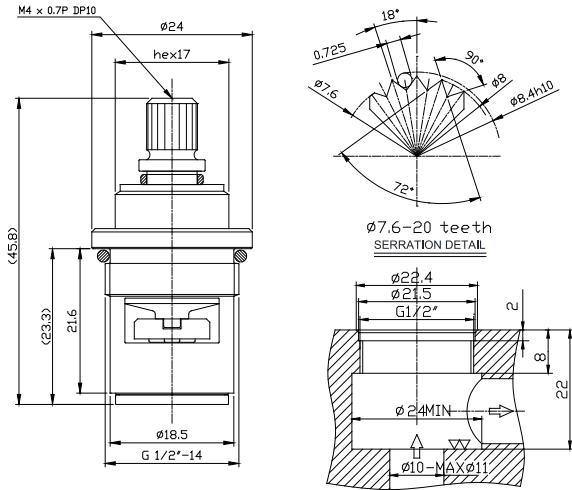
SCC S1030-PO

1/2" Plastic Ceramic Headwork



Max. Opening Angle	90°	
Nut Torque	9 ~ 10 Nm	
Water Resistance Pressure	Max. 50bar	
Working Torque	Max. 0.5 Nm	
Max. Temperature	90°C	
Max. Noise Level	15 ~ 18db	
Flow Rate	(at 1bar)	15~18 l/min
	(at 2bar)	23~25 l/min
	(at 3bar)	28~32 l/min
Endurance Test	500,000 times	

Dimensions (mm)



1. A-TYPE LEFT → RIGHT : CLOSE ⌚

2. B-TYPE RIGHT → LEFT : CLOSE ⌚

V-cutting for Spindle



THERMOSTATIC CARTRIDGE

BRASS THERMOSTATIC CARTRIDGE

PLASTIC THERMOSTATIC CARTRIDGE

SMA THERMOSTATIC CARTRIDGE

S.C.C THERMOSTATIC CARTRIDGE



The S.C.C Thermostatic cartridge is assembled by the very delicate sensor and finely wrought brass parts, so only this one can react such tiny changes in temperature.

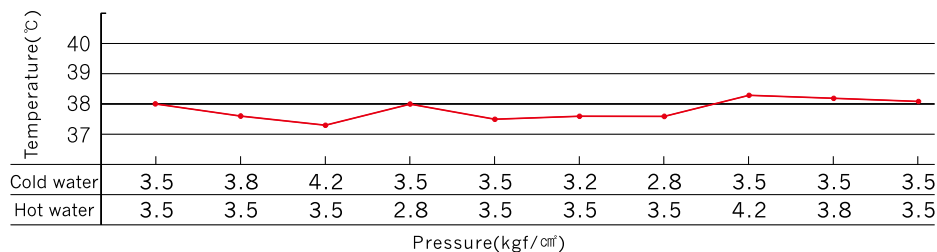
It is designed to improve our home life by using constant temperature of water in the change of water pressure.

It can provide excellent service to you with high quality.

Technical Data

- Turning angle : 330°
- Temperature range : 20~50°C
- Temperature stop : 38°C or 40°C
- Inlet water supply temperature : Hot water 70°C, Cold water 15~25°C
- Outlet water temperature adjusted on 38°C±1.5°C
- Outlet flow rate adjusted on 38°C : 20ℓ/min at 3bar
- Operating pressure : 0.5~6 bar
- Recommend pressure : 1~5bar
- Life cycle : 100,000 cycle

Temperature Variation Test

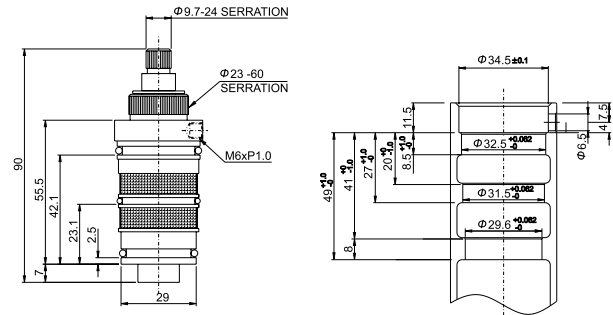


SCC TH100

Thermostatic Cartridge



Dimensions (mm)



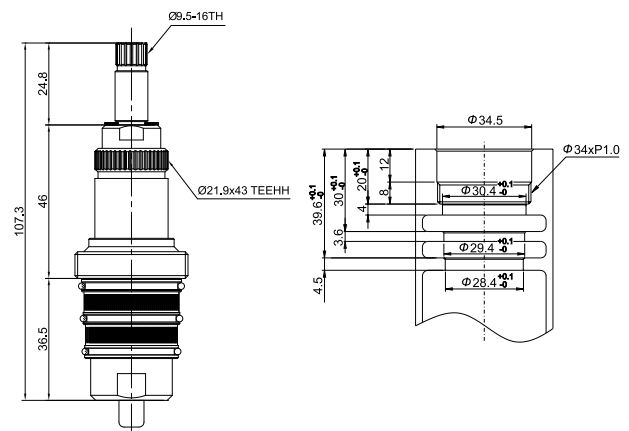
Turning angle	330°
Temperature range	20~50°C
Temperature stop	38°C or 40°C
Inlet water supply temperature	Hot water 70°C Cold water 15°C
Outlet water temperature adjusted on 38°C	38°C±1.5°C
Outlet flow rate adjusted on 38°C	20ℓ / min (3bar)
Operating pressure	0.5~6bar(0.05~0.6Mpa)
Recommend pressure	1~5bar(0.1~0.5Mpa)
Life cycle	100,000 cycles

SCC TH200

Thermostatic Cartridge



Dimensions (mm)



Turning angle	330°
Temperature range	20~50°C
Temperature stop	38°C or 40°C
Inlet water supply temperature	Hot water 70°C Cold water 15°C
Outlet water temperature adjusted on 38°C	38°C±1.5°C
Outlet flow rate adjusted on 38°C	20ℓ / min (3bar)
Operating pressure	0.5~6bar(0.05~0.6Mpa)
Recommend pressure	1~5bar(0.1~0.5Mpa)
Life cycle	100,000 cycles

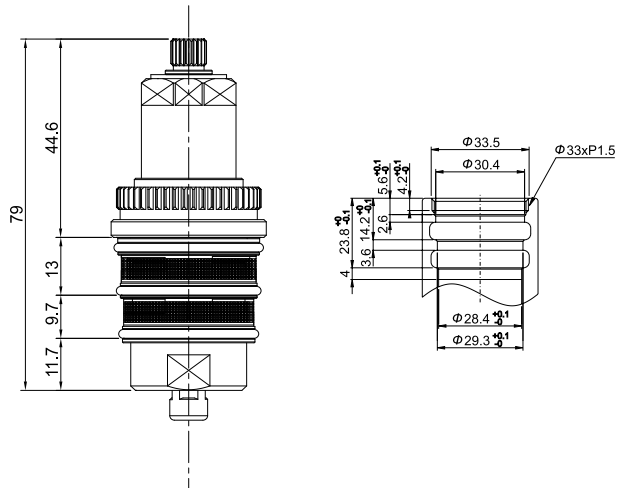
S.C.C THERMOSTATIC CARTRIDGE

SCC TH300 Thermostatic Cartridge



Turning angle	330°
Temperature range	20~50°C
Temperature stop	38°C or 40°C
Inlet water supply temperature	Hot water 70°C Cold water 15°C
Outlet water temperature adjusted on 38°C	38°C±1.5°C
Outlet flow rate adjusted on 38°C	20ℓ / min (3bar)
Operating pressure	0.5~6bar(0.05~0.6Mpa)
Recommend pressure	1~5bar(0.1~0.5Mpa)
Life cycle	100,000 cycles

Dimensions (mm)

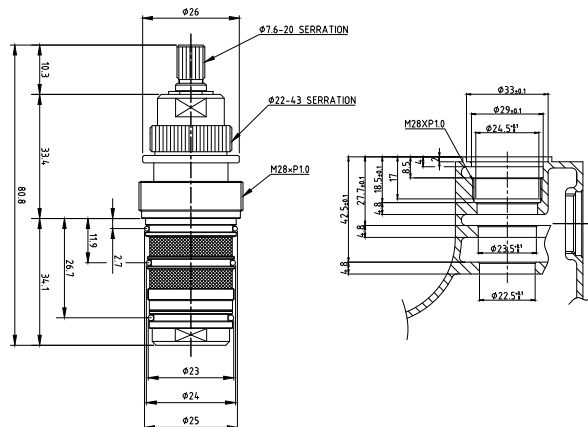


SCC TH800



Turning angle	330°
Temperature range	20~50°C
Temperature stop	38°C or 40°C
Inlet water supply temperature	Hot water 70°C Cold water 15°C
Outlet water temperature adjusted on 38°C	38°C±1.5°C
Outlet flow rate adjusted on 38°C	20ℓ / min (3bar)
Operating pressure	0.5~6bar(0.05~0.6Mpa)
Recommend pressure	1~5bar(0.1~0.5Mpa)
Life cycle	100,000 cycles

Dimensions (mm)



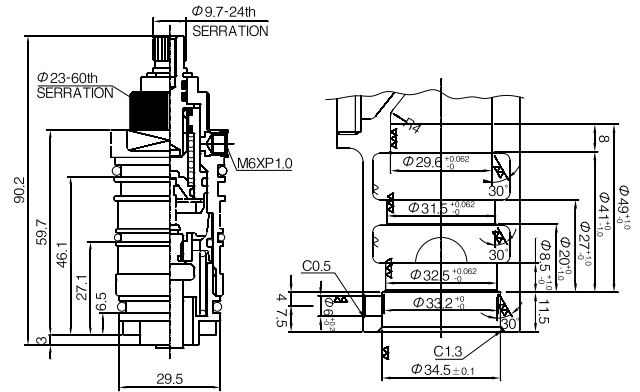
SCC TH100P

Plastic Thermostatic Cartridge

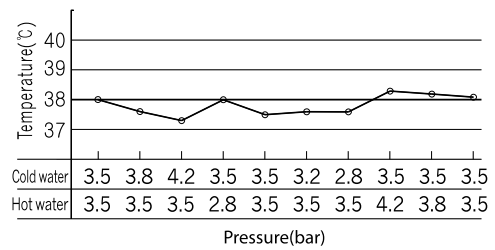


Turning angle	330°
Temperature range	20~50°C
Temperature stop	38°C or 40°C
Inlet water supply temperature	Hot water 70°C Cold water 15°C
Outlet water temperature adjusted on 38°C	38°C±1.5°C
Outlet flow rate adjusted on 38°C	20ℓ / min (3bar)
Operating pressure	0.5~6bar(0.05~0.6Mpa)
Recommend pressure	1~5bar(0.1~0.5Mpa)
Life cycle	100,000 cycles

Dimensions (mm)



Temperature Variation Test



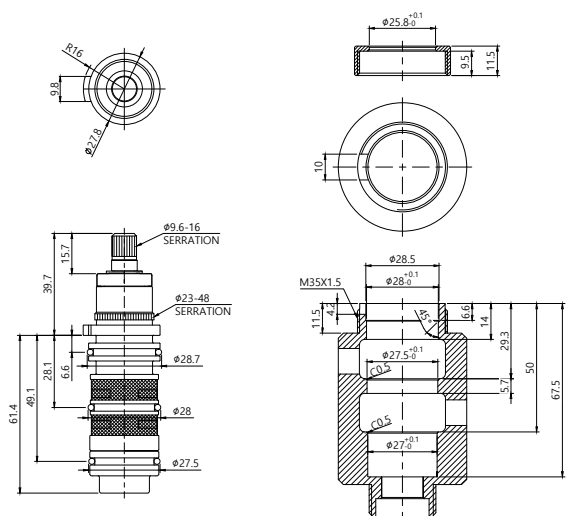
SCC TH720

SMA(Shape Memory Alloys) Cartridge



Nut Torque	10 ~ 11 Nm
Water Resistance Pressure	Max. 35bar
Working Torque (Operation distance 100mm standard)	Max. 0.08 Nm
Max. Temperature	90°C
Flow Rate	Min. 23~24 ℓ/min (3bar)
Endurance Test	500,000 times

Dimensions (mm)



CERTIFICATIONS





The Preferred Choice

www.scco.co.kr

In our in which, almost daily, new technologies led by "fine ceramic" are new era which only yesterday would have seemed untouchable dream.

"Fine ceramic is the key to a new era of technology."

At Shinhan Ceramic, our expertise in fine ceramic has allowed us to take the responsibility of opening this new era with advanced technology.



HEAD OFFICE & FACTORY 367 Siwha venture-ro, Siheung-si, Gyeonggi-do, 15117, Koea / T. +82- 31- 498-3174 / F. +82-31-498-3176
H. www.scco.co.kr / E. scco@scco.co.kr

GUANGZHOU BUSINESS OFFICE No.9, xinshibei road, shuikou town, kaiping city, guandong province / T. +86- 750-272-8965
F. +86-750-272-8965 / F. +86-750-272-8965 / E. 1300264927@qq.com

CHINA OFFICE & FACTORY(XIAMEN) No.169 , Xingqian Road, Jimei District, Xiamen, 361-022, China / T. +86-(0)592-636-1230~2
F.+86(0) 592-636-1233 / H. www.china-scc.com / E. scco@china-scc.com